



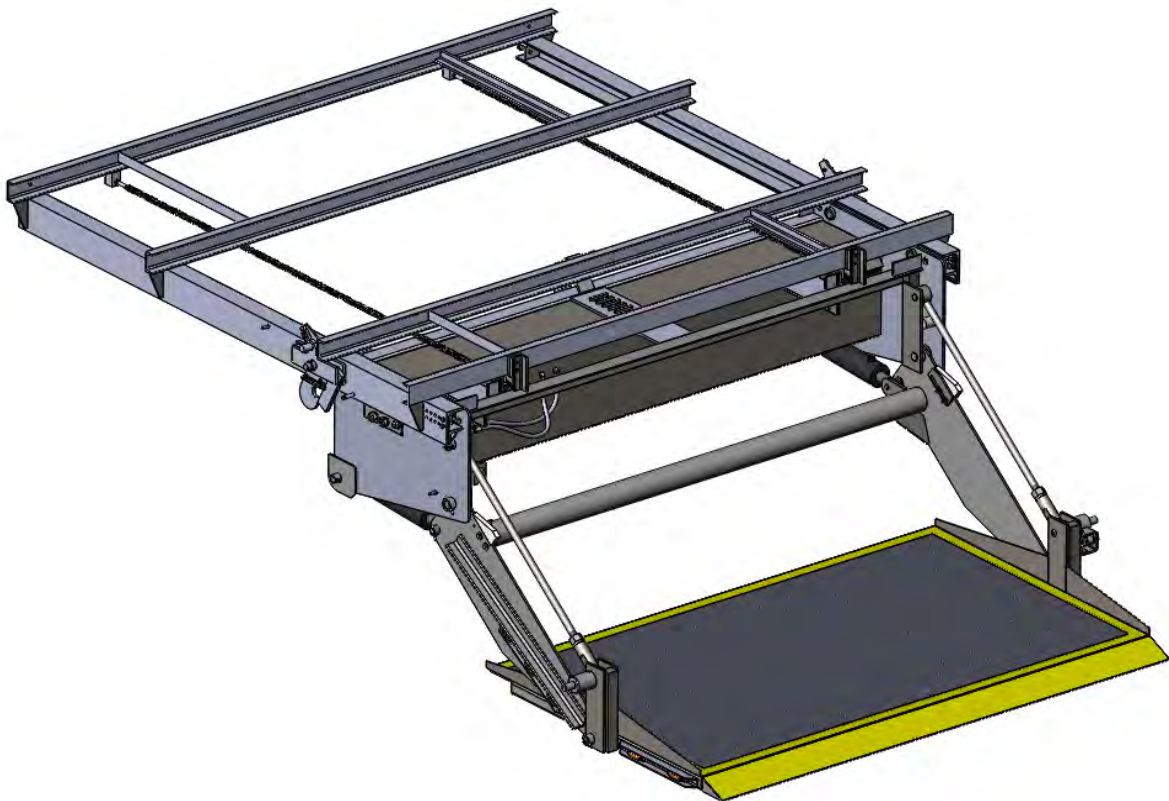
Parts Replacement Guide

For

DOMINO'S PIZZA

TLS3510RL Hide-A-Way®

Trailer Side Gate



10335 Wayne Avenue • Cincinnati, OH 45215

Ph: 513.891.6210 • Toll-Free: 866.539.6261

Fax: 513.891.4901

www.leymanlift.com • sales@leymanlift.com

LML00457-8-31-22

Table of Contents

How to Use the Guide	3
Section 1: Structural Components	4
Outer Slide Assembly	4
Auto Lock Components	6
Universal End Stops.....	10
Chain Anchor Assemblies.....	11
Dual Chain Power In/Out Assembly.....	12
Inner Slide Assembly	17
Compression Arm Assembly	21
Tension Arm Assembly.....	24
Platform Assembly	25
Section 2: Pivot Pins.....	26
Cylinder Pins.....	26
Compression & Tension Arm Pins at Inner Slide.....	27
Platform Pins.....	28
Section 3: Power Unit Replacement Parts	29
Section 4: Hydraulics – Interior Parts.....	30
Power Unit Parts	30
Hand Pump Parts	31
Section 5: Hydraulics – Exterior Parts	32
Section 6: Electrics	33
Recessed Switches	33
Switch Control Cables	34
IN/OUT Switch Box Assembly Replacement Parts	35
Power Unit Electric Connections.....	36
Section 7: Electrics – Sensors and Lights.....	37
Exterior Proximity Sensors	37
Interior Control Components.....	37
Interior Control Wiring.....	38
Sensors and Lights Part List.....	39

How to Use the Guide

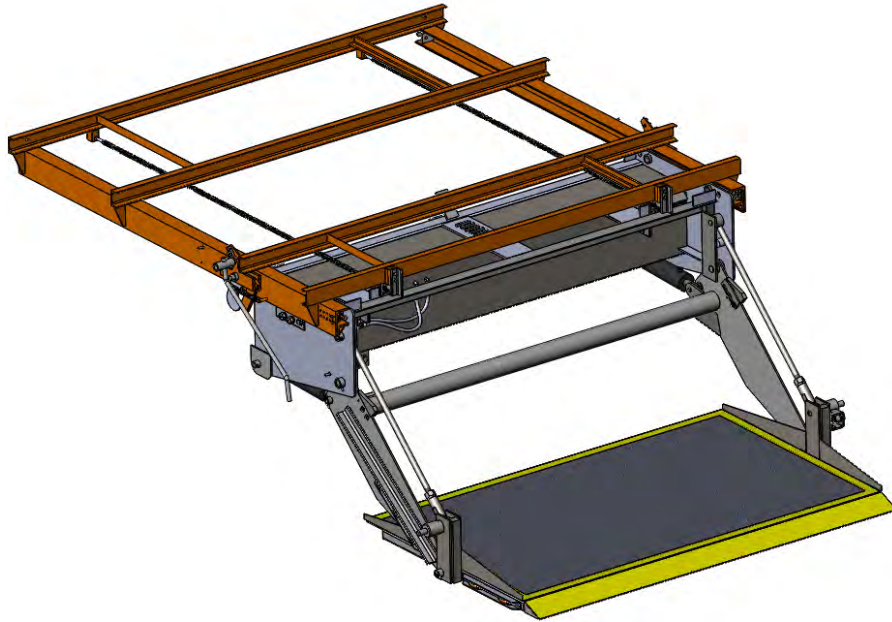
This guide will provide part numbers for all of the main structural assemblies, pivot pins, hydraulic components and electrical components used on the Domino's TLS3510. Please follow the steps below to determine the part number(s) needed for replacement:

- 1) Locate the section of the guide which corresponds to the type of part required.
- 2) The top of each page shows the entire lift gate (or subassembly), and the referenced part is highlighted in orange where it is located on the gate. Smaller parts are also highlighted in orange, but additionally they will have an arrow to more easily locate where the part is found.
- 3) Below the overall lift gate view is the part number in **BOLD** text, with an isolated image of the part or assembly.
Note 1: The isolated image shows everything that is included with the part number.
- 4) Related parts are found at the bottom of each page for each replacement part.
Note 1: Refer to the notes following the related part description. The notes will indicate if the related part is included with the replacement part, or if it will need to be purchased separately.

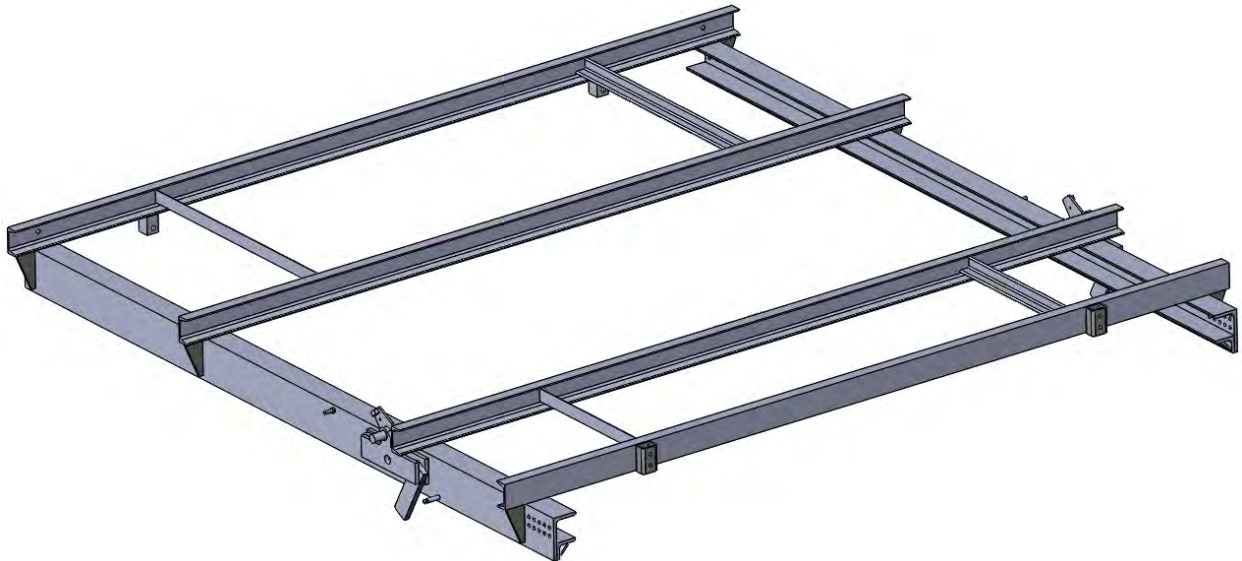
Please refer to the owner's manual supplied with the TLS lift gate for information regarding operation instructions, preventative maintenance schedules, recommended fluids and troubleshooting.

Section 1: Structural Components

Outer Slide Assembly



DA-817-1059-GV



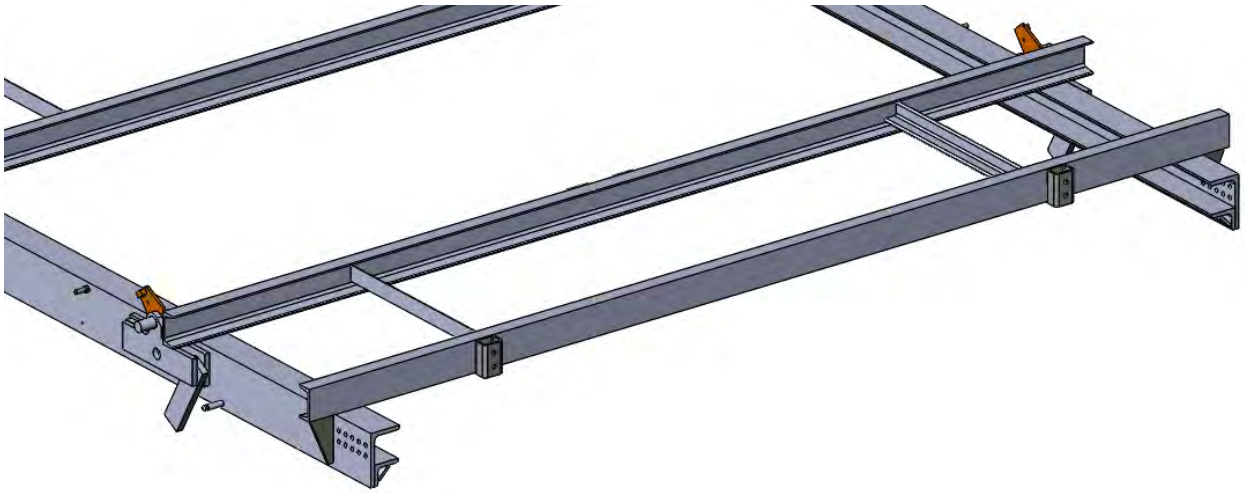
Note 1: Auto lock shaft and pivot plates are a part of this assembly and are also available separately.

Note 2: Auto lock hooks, adjustment cams, universal end stops, removeable chain anchors and dual chain IN/OUT subassembly are NOT parts of this assembly.

BT-817-953-005 – Auto Lock Shaft (available separately)

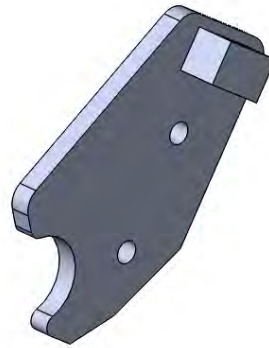
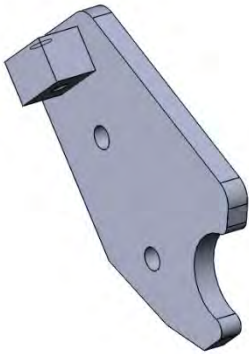


The next two parts are welded to the auto lock shaft.



AA-817-049 – Pivot Plate Assembly LH

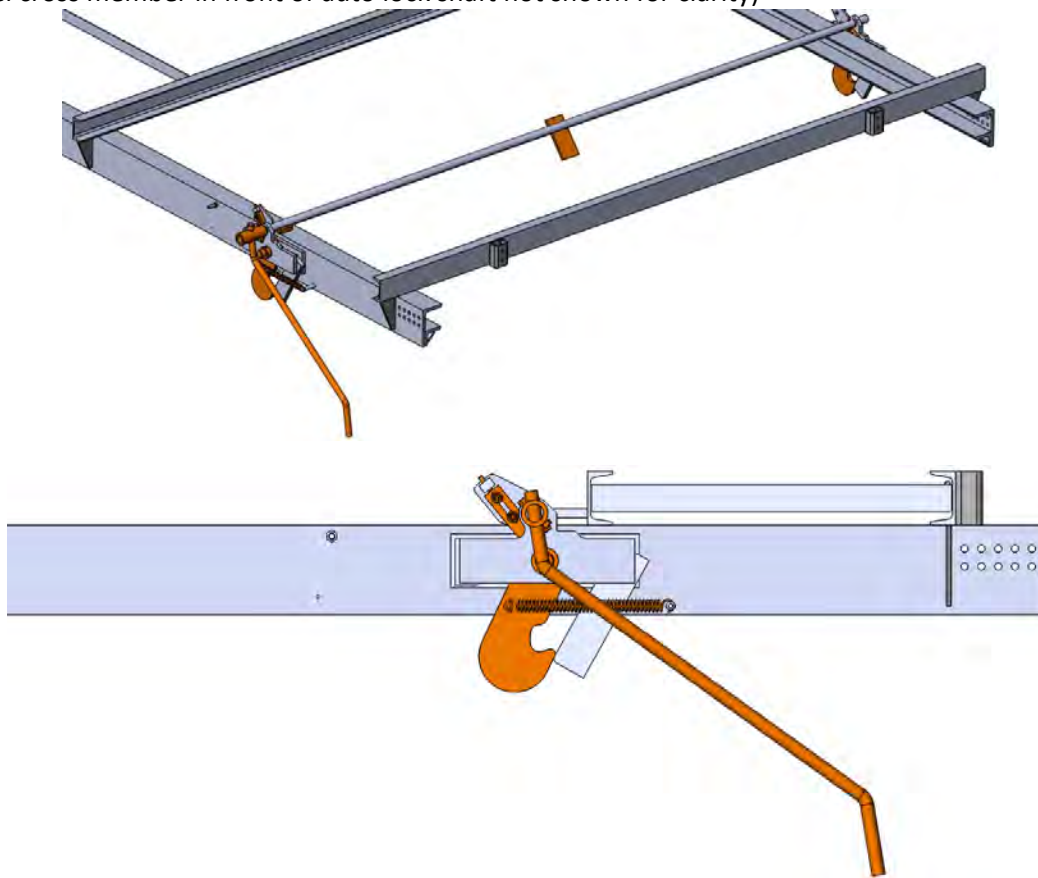
AA-817-050 – Pivot Plate Assembly RH



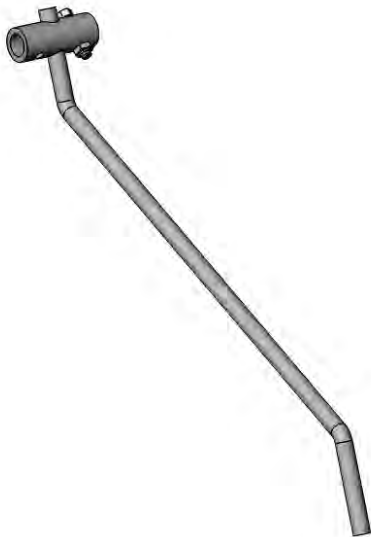
Please refer to next section for the skid pads and hardware used with the pivot plates.

Auto Lock Components

These parts are NOT included with the DA-817-1059 outer slide weldment.
(Channel cross member in front of auto lock shaft not shown for clarity)



BA-817-638 – Auto Lock Handle (with mounting hardware)



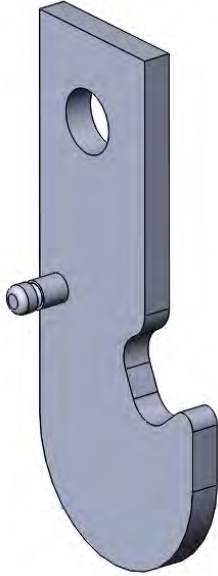
Mounting Hardware (Available Separately):

P11082 – $\varnothing 7/16''$ HHCS

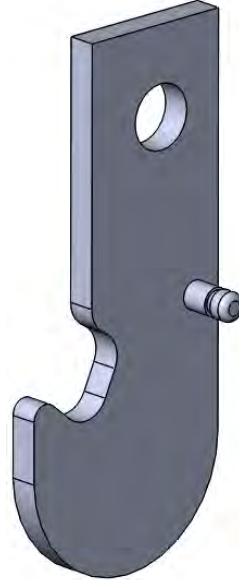
P23526 – $\varnothing 7/16''$ Lock Nut

EYMAN
LIFT GATES
Innovation. Service. Solutions.

BA-817-040 – Auto Lock Hook LH



BA-817-041 – Auto Lock Hook RH



Related Parts (Available Separately):

P43570 – 1" ID x 1/2" LG Bearing, (1) required per auto lock hook



AA-817-087 – Auto Lock Pivot Pin and Boss Assembly (LH/RH same)

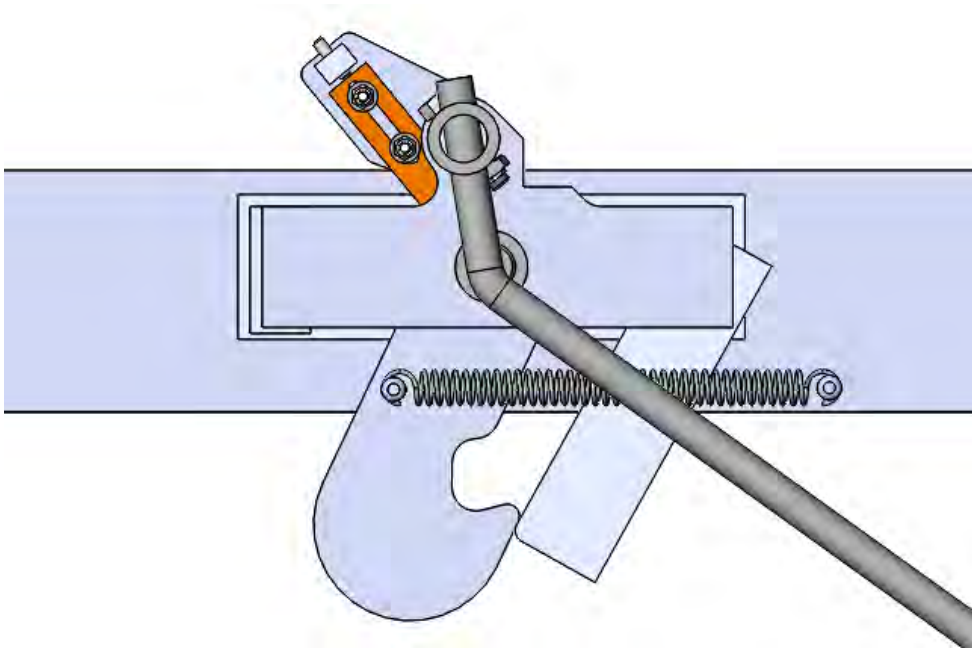


Related Parts (Available Separately):

P47514 – $\varnothing 1/4$ " Roll pin, (1) required per each assembly

P25183 – Auto Lock Hook Return Spring (LH/RH same)





AP-817-233 – Auto Lock Skid Pad (adjusts hook position)



Mounting Hardware (Available Separately):

P10570 – $\emptyset 1/4$ " HHCS, (2) required per each skid pad

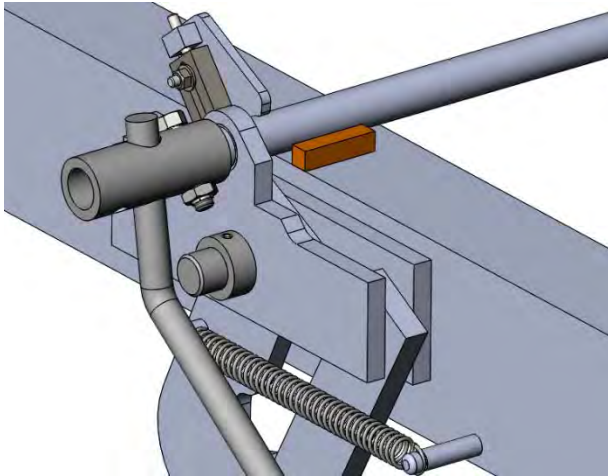
P26007 – $\emptyset 1/4$ " Flat washer, (2) required per each skid pad

P23502 – $\emptyset 1/4$ " Lock nut, (2) required per each skid pad

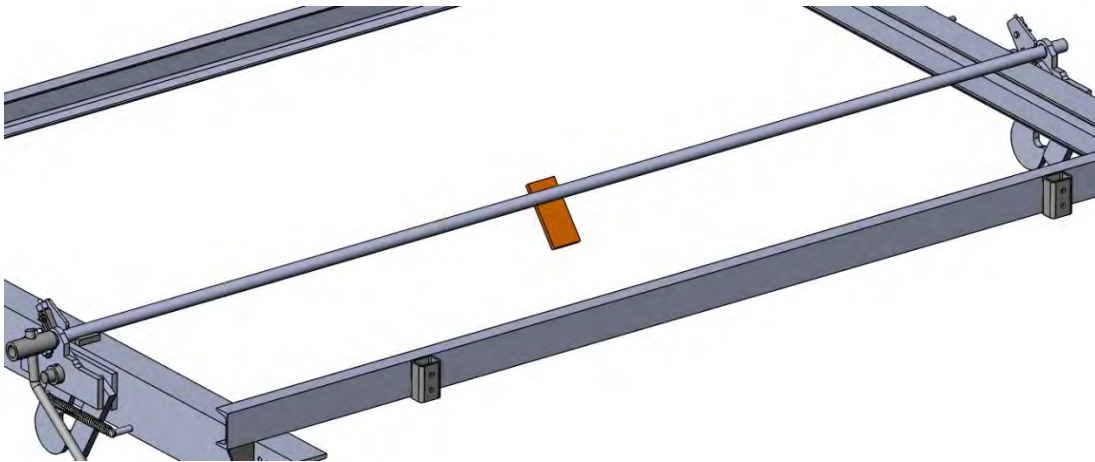
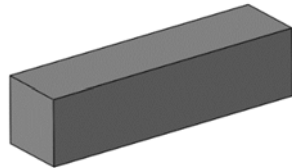
P14515 – $\emptyset 1/4$ " Set screw, (1) required per each skid pad (adjust position of skid pad)

Complete Hardware Kit (for both sides) is **AA-817-323**

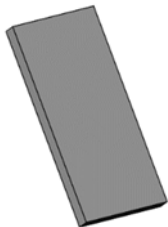
The next two parts are welded to the auto lock shaft



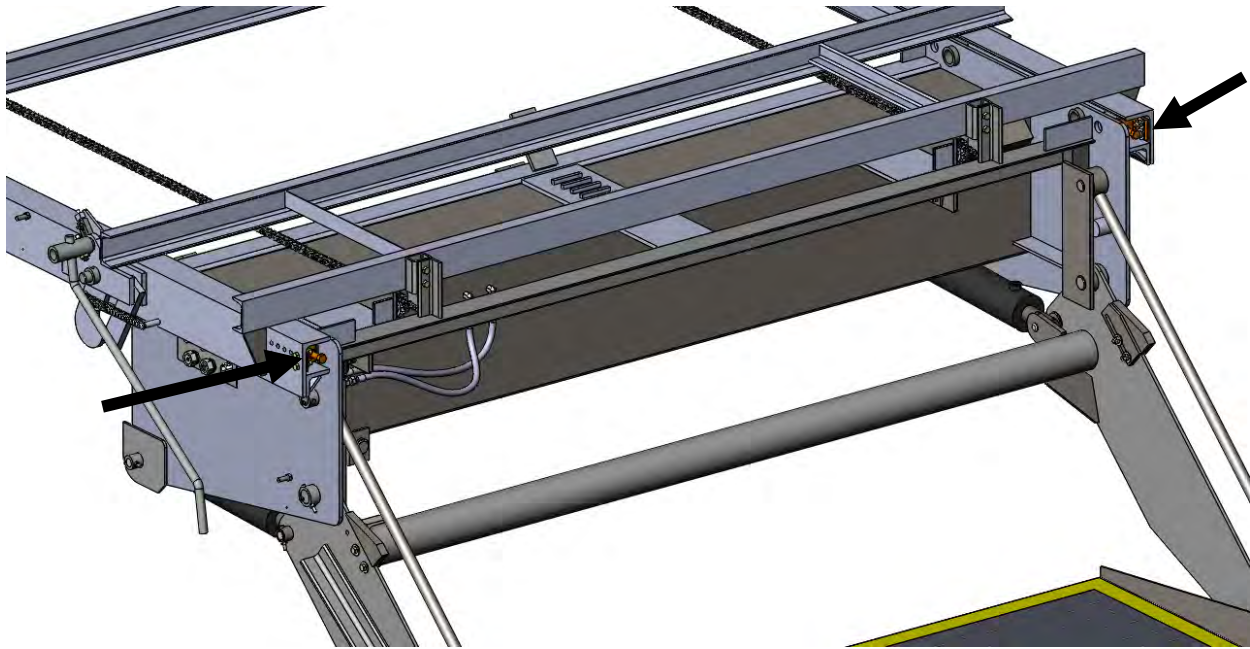
S319-002.000 – Auto Lock Shaft Stop Block



S113-005.375 – Inner Slide Safety Stop

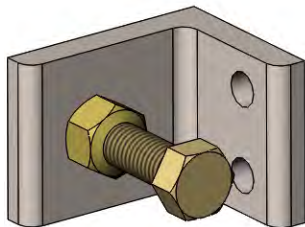


Universal End Stops



End stops also located at far end of side rails, (4) total used on gate.

AA-817-732-GV



Note 1: mounting hardware NOT included with end stops

Mounting Hardware (Available Separately):

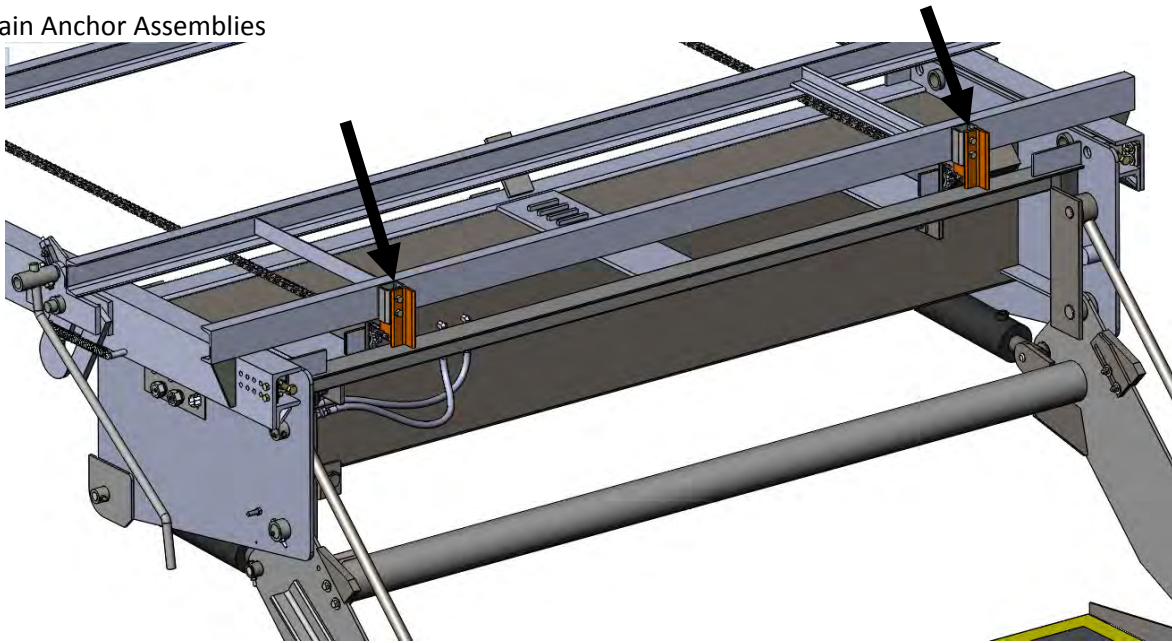
P11023 – $\varnothing 3/8$ " Hex head cap screw, (2) required per end stop

P23501 – $\varnothing 3/8$ " Lock nut, (2) required per end stop

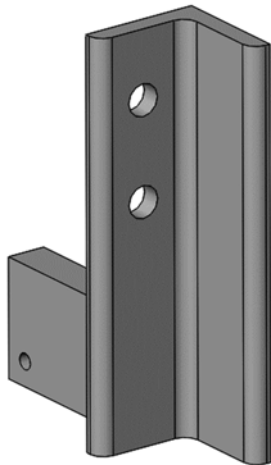
P26501 – $\varnothing 3/8$ " Flat washer, (4) required per end stop

Complete Hardware Kit (for all locations) is **AA-817-324**

Chain Anchor Assemblies



AA-817-124-GV



Note 1: mounting hardware NOT included with chain anchors

Mounting Hardware (Available Separately):

P11026 – $\varnothing 3/8$ " Hex head cap screw, (2) required per end stop

P23501 – $\varnothing 3/8$ " Lock nut, (2) required per end stop

P26017 – $\varnothing 3/8$ " Lock washer, (2) required per end stop

Complete Hardware Kit (for all locations) is **AA-817-1084**

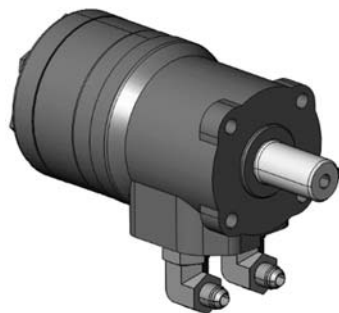
Dual Chain Power In/Out Assembly
CA-817-1083 (complete assembly)



Motor and idler mounting plates are a part of the inner slide assembly, and are only shown for reference.

Power In/Out Components (available separately)

P33625K (includes elbow fittings, but no mounting hardware)

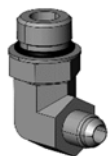


Mounting Hardware (Available Separately):

P11021 – $\varnothing 3/8$ " Hex head cap screw, (4) required

P26017 – $\varnothing 3/8$ " Lock washer, (4) required

P34204 – 90° Elbow



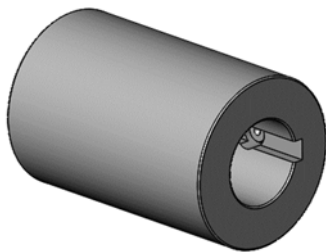
AT-501-354-018 – Hydraulic Hose, 18” long (outside hose)
AT-501-354-020 – Hydraulic Hose, 20” long (inside hose)



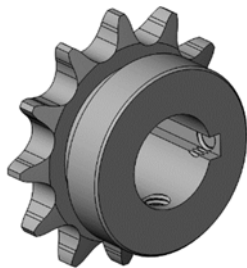
BP-817-1067 – Drive Shaft



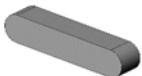
P34280 – Shaft Coupler (includes set screws)



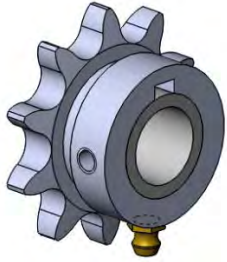
P25236 – Drive Sprocket (includes set screws), (1) required per chain, (2) total per gate



P28503 – Key, (1) required per drive sprocket, (1) required per shaft coupler; (3) total per gate



A5008-3A – Idler Sprocket (includes bushing & grease fitting), (2) required per chain, (4) total per gate



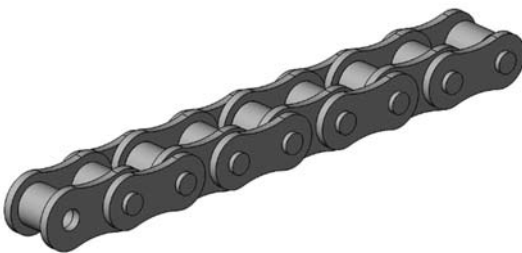
P26029 – Washer, (1) used with each idler sprocket, (4) total per gate



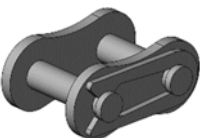
P24018 – $\varnothing 3/4"$ Retaining Ring, (1) used with each idler sprocket, (4) total per gate



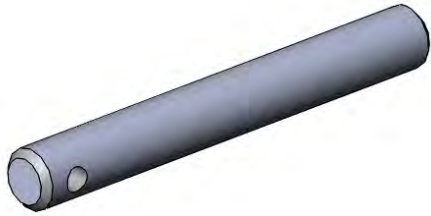
P38554 – Roller Chain, 95" long, (2) total per gate



P38555 – Connecting Link, (2) required per chain, (4) total per gate



C5102-33A – Chain Mount, (1) required per chain, (2) total per gate



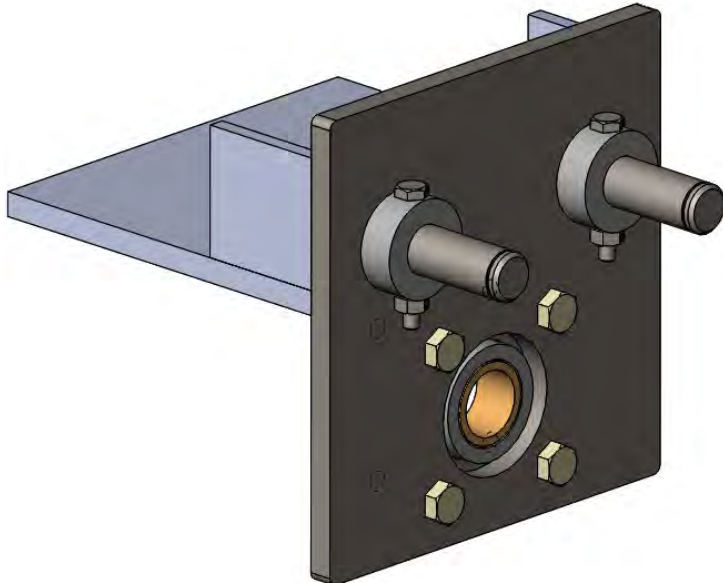
Chain Mount Hardware (Available Separately):

P23544 – $\varnothing 1/2$ " Hex nut, (1) required per chain mount, (2) total per gate

P23533 – $\varnothing 1/2$ " Jam nut, (1) required per chain mount, (2) total per gate

P27033 – $\varnothing 1/2$ " Lock washer, (1) required per chain mount, (2) total per gate

The following components are used with the motor and idler mounting plates.



AP-817-818 – Idler Sprocket Shaft



Mounting Hardware (Available Separately):

P11062 – $\varnothing 1/4$ " Hex head cap screw, (1) required per idler sprocket shaft

P23502 – $\varnothing 1/4$ " Lock nut, (1) required per idler sprocket shaft

BG-817-1066 – Drive Shaft Mounting Plate (Includes Bushing)



Mounting Hardware (Available Separately):

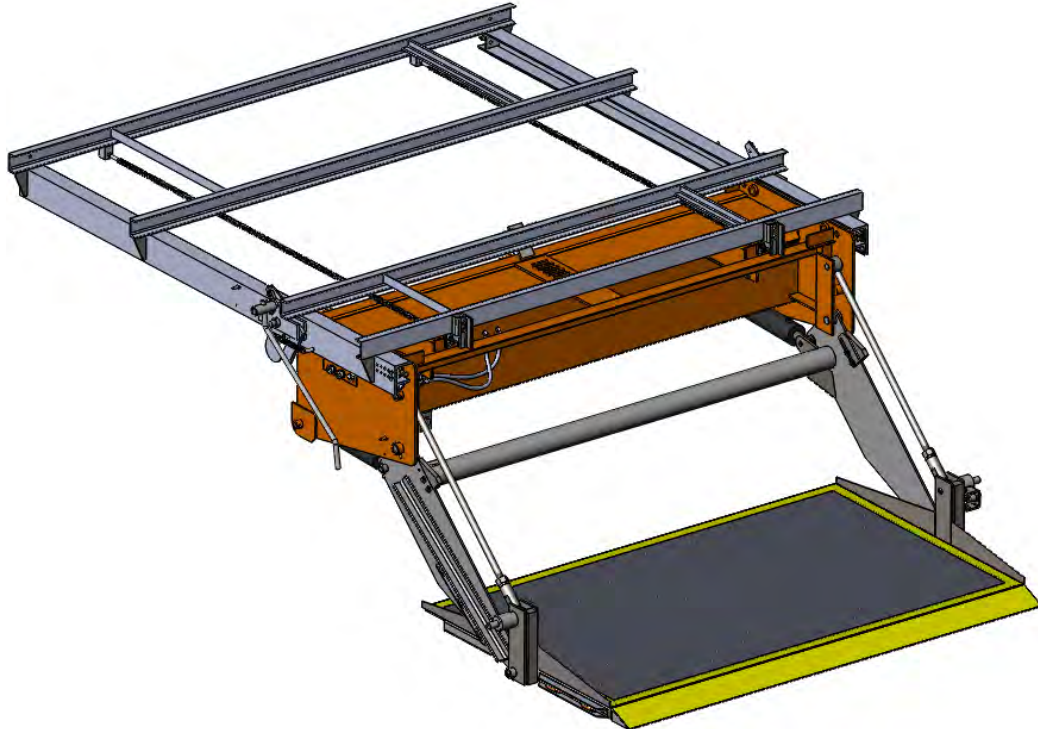
P11048 – $\varnothing 3/8$ " Hex head cap screw, (4) required per mounting plate

P23501 – $\varnothing 3/8$ " Lock nut, (4) required per mounting plate

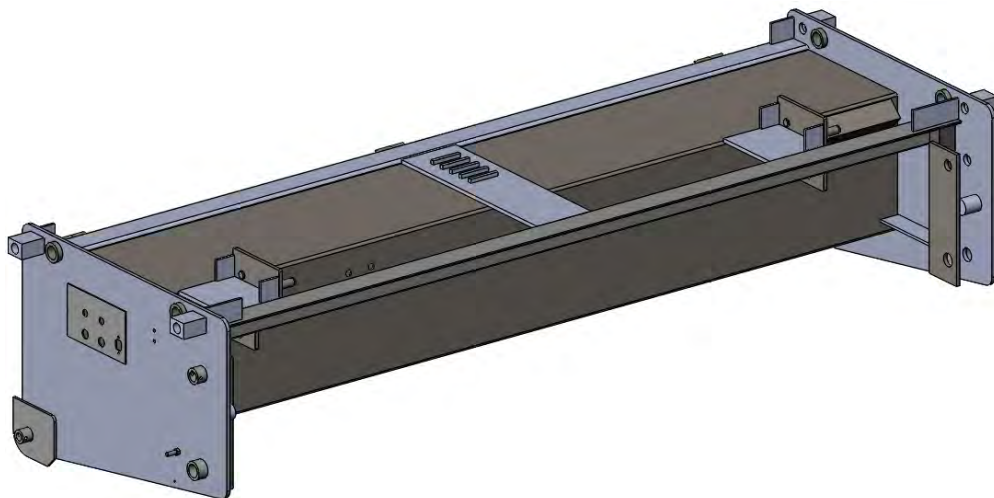
P43543 – $\varnothing 1$ " Bushing



Inner Slide Assembly



DA-817-1061-GV

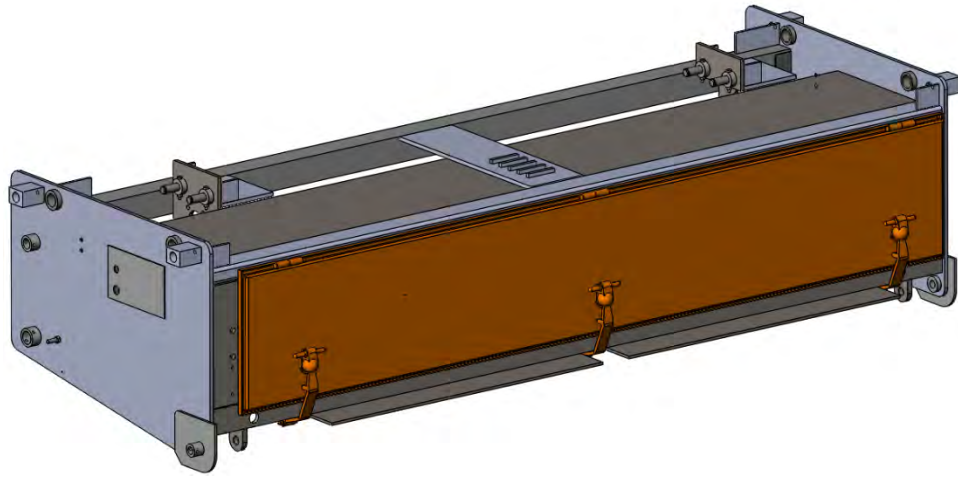


Note 1: Door assembly and T-latches are included.

Note 2: Rollers, skid pads and pivot pins are NOT a part of this weldment

Related Parts Used with Inner Slide:

Door & Frame Subassembly



BA-817-1087-GV



Note 1: Hinges and T-latched are included in this subassembly

Note 2: D gasket NOT included in this subassembly

Related Parts (Available Separately):

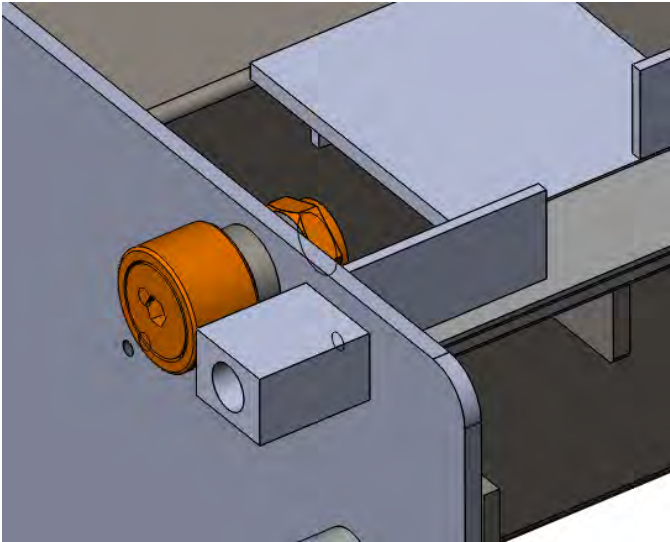
P48009 – D gasket, (145”) required for door

P49105 – T-latch & Keeper, (3) required for door



P49092 – Rivets, (2) required per t-latch

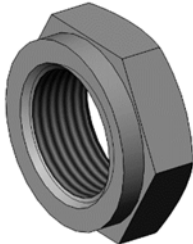
Rollers and Hardware



P37544 – Roller, (4) required per gate



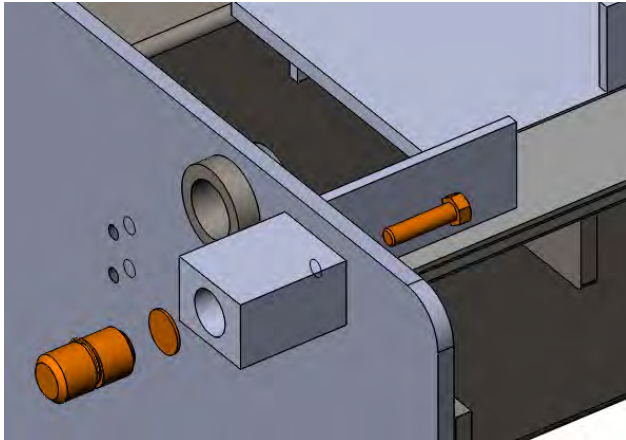
P23523 – Roller Lock Nut, (4) required per gate (1 required per roller)



P32012 – Grease Fitting, (4) required per gate (1 required per roller)



Skid Pad Components

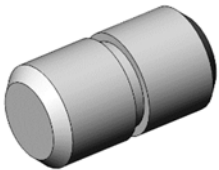


P11067 – $\varnothing 3/8$ " Hex head cap screw, (4) required per gate (1 required for each skid pad)

AP-817-255 – Backup disc, (4) required per gate (1 required for each skid pad)



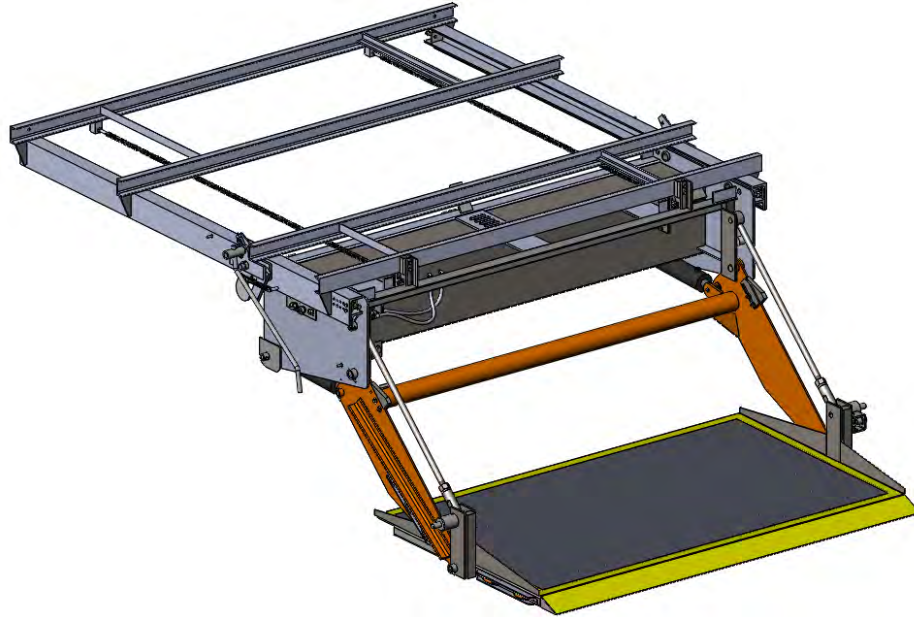
AP-817-044 – Skid pad, (4) required per gate (1 required at each corner)



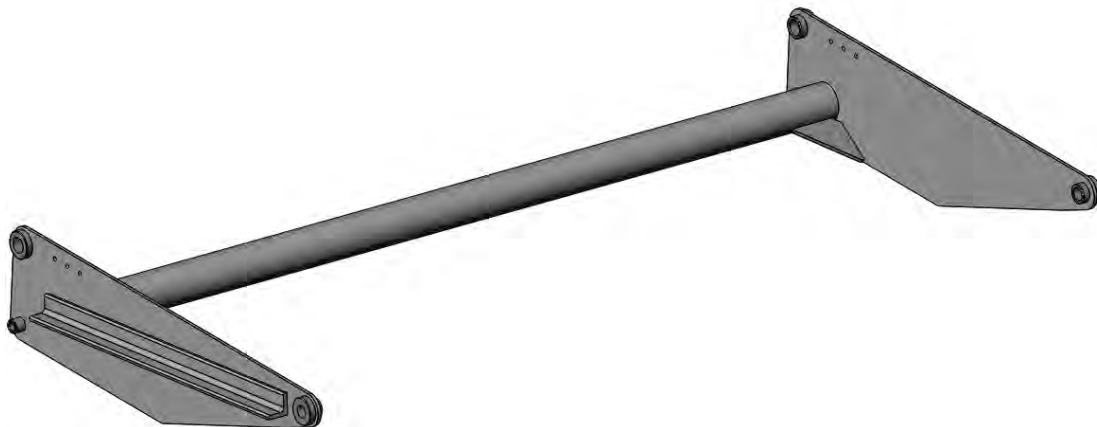
P33925 – O-ring, (4) required per gate (1 required per skid pad)



Compression Arm Assembly



DT-817-769-005-GV



Note 1: Bearings are included in this assembly

Note 2: Pivot pins and platform up stops are NOT included in this assembly

Related Parts (Available Separately):

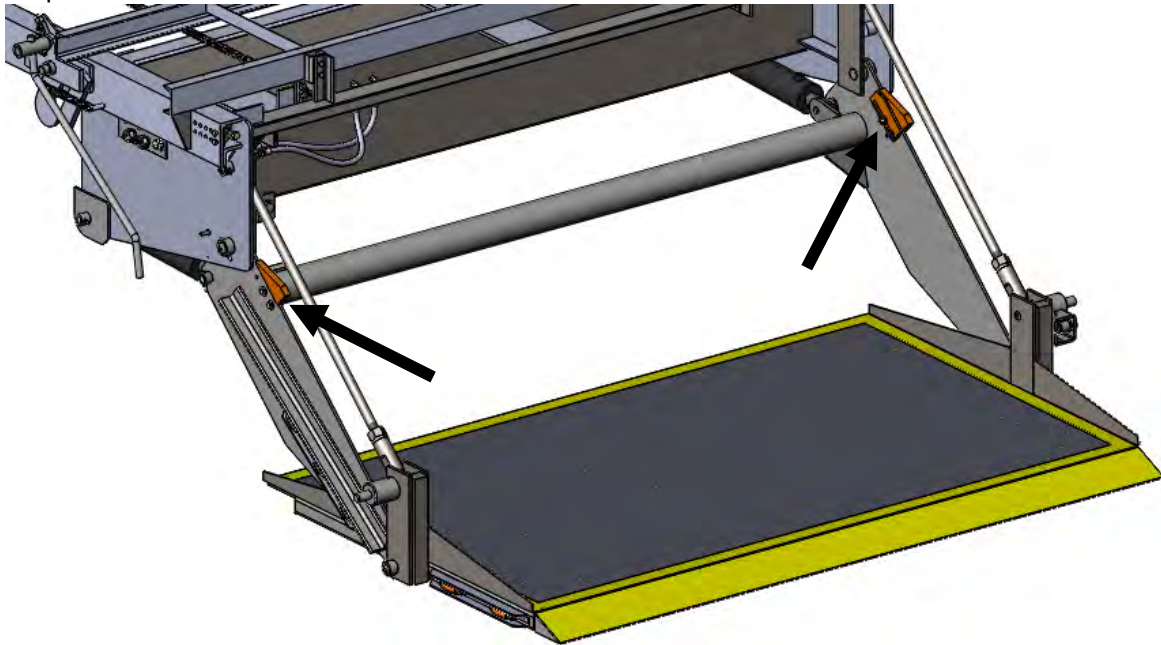
P43566 – $\varnothing 1\text{-}1/4\text{'}$ ID Bearing, (2) required (compression arm/inner slide pivot)

P43567 – $\varnothing 1\text{'}$ ID Bearing, (2) required (compression arm/platform pivot)

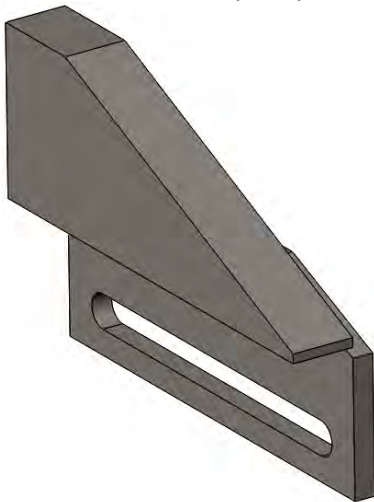
Complete bearing kit (all locations) is **AA-817-318**

Related Parts Used with Compression Arm (Available Separately):

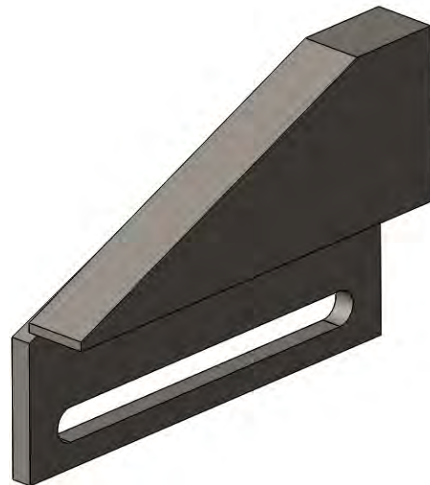
Up Stops



BA-817-135-GV – Up Stop LH



BA-817-134-GV – Up Stop RH



Note 1: mounting hardware NOT included with up stops

Related Parts (Available Separately):

P11023 – $\varnothing 3/8$ " Hex head cap screw, (2) required per up stop

P23501 – $\varnothing 3/8$ " Lock nut, (2) required per up stop

P26501 – $\varnothing 3/8$ " Flat washer, (4) required per up stop

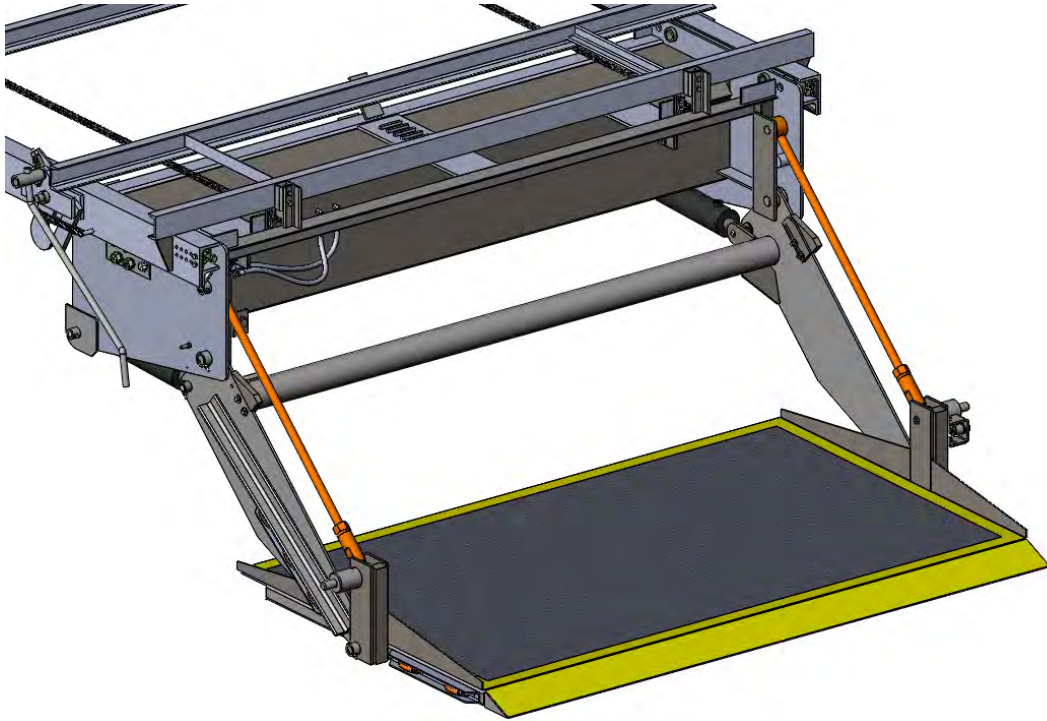
Complete up stop hardware kit (both sides) is **AA-817-322**

AP-817-132-GV – Up Stop Spacer (LH/RH same, (1) required per up stop)



Note 1: This part is located behind up stops

Tension Arm Assembly



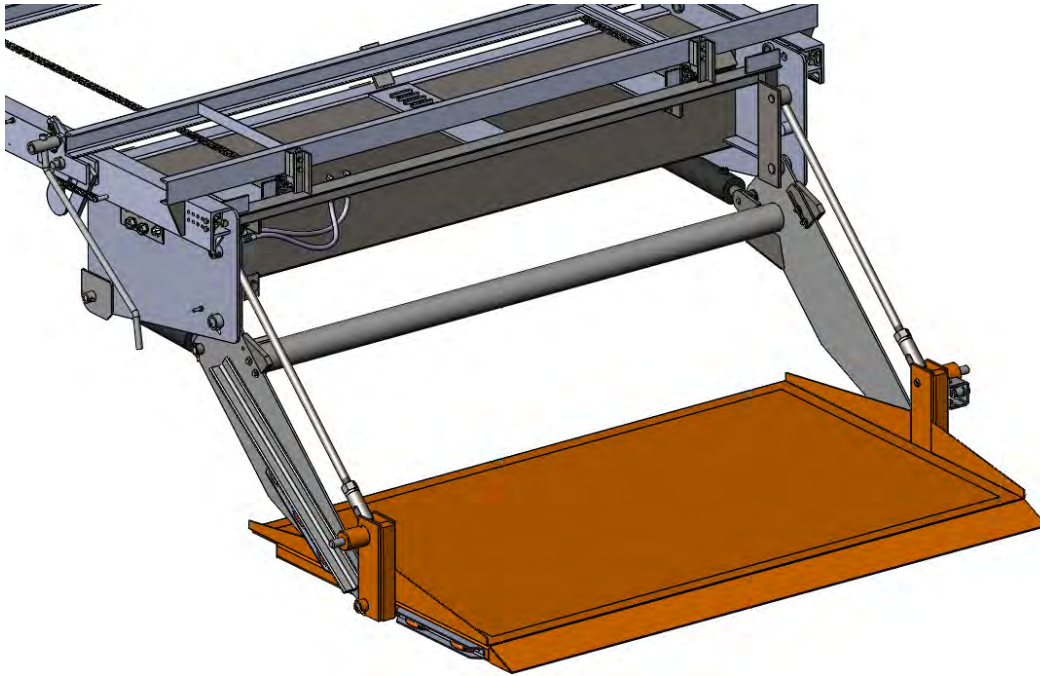
BA-817-100-GV



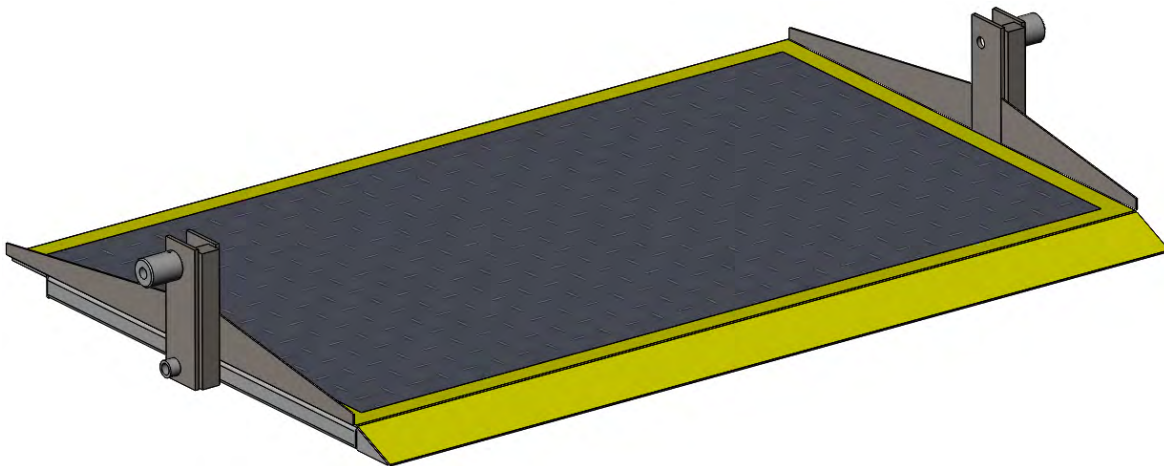
Note 1: Bearings are included in this assembly
Note 2: Pivot pins are NOT included in this assembly

Related Parts (Available Separately):
P43567 – $\varnothing 1$ " ID Bearing, (2) required per arm

Platform Assembly



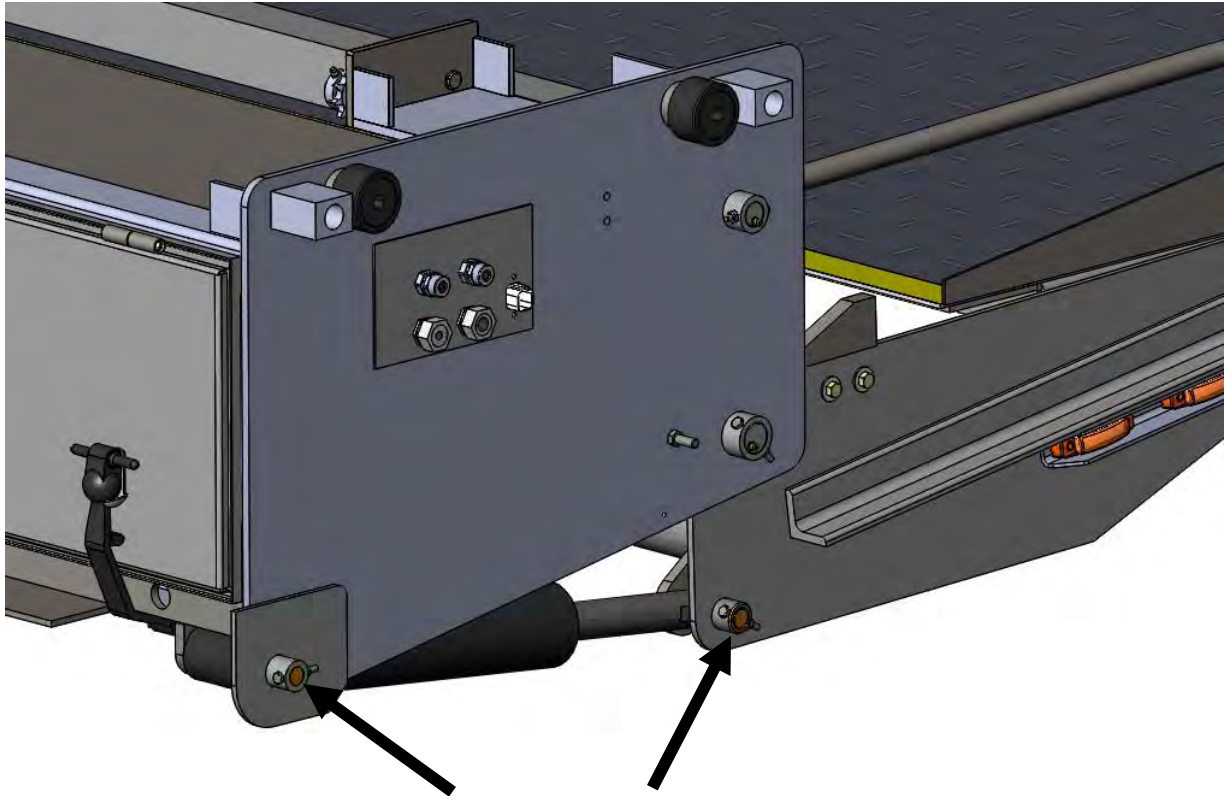
DA-817-1070-GV



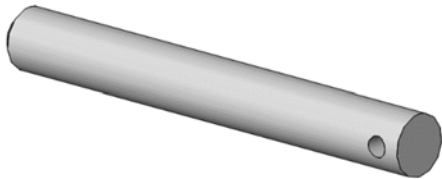
Please reference paint option code 106 for 2" wide high-viz yellow strip around perimeter of platform and entire tapered ramp face.

Section 2: Pivot Pins

Cylinder Pins



Base End: AP-817-757 (LH/RH same)

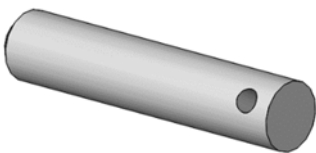


Related Parts (Available Separately):

P11062 – $\varnothing 1/4$ " Hex head cap screw, (1) required per pivot pin

P23502 – $\varnothing 1/4$ " Lock nut, (1) required per HHCS

Rod End: AP-817-759 (LH/RH same)

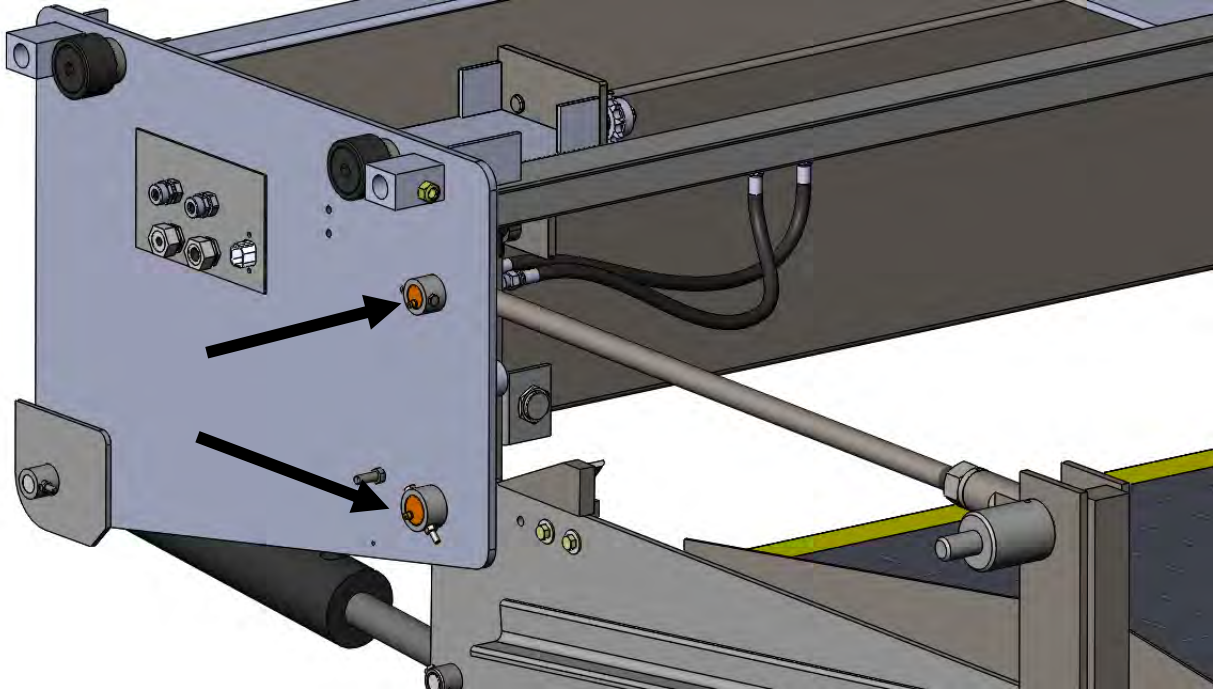


Related Parts (Available Separately):

P11062 – $\varnothing 1/4$ " Hex head cap screw, (1) required per pivot pin

P23502 – $\varnothing 1/4$ " Lock nut, (1) required per HHCS

Compression & Tension Arm Pins at Inner Slide



Compression Arm Pin (bottom arm): AP-817-843 (LH/RH same)



Related Parts (Available Separately):

P11063 – $\varnothing 1/4$ " Hex head cap screw, (1) required per pivot pin

P23502 – $\varnothing 1/4$ " Lock nut, (1) required per HHCS

P32016 – Grease fitting, (1) required per pin

Tension Arm Pin (top arm): AP-817-842 (LH/RH same)



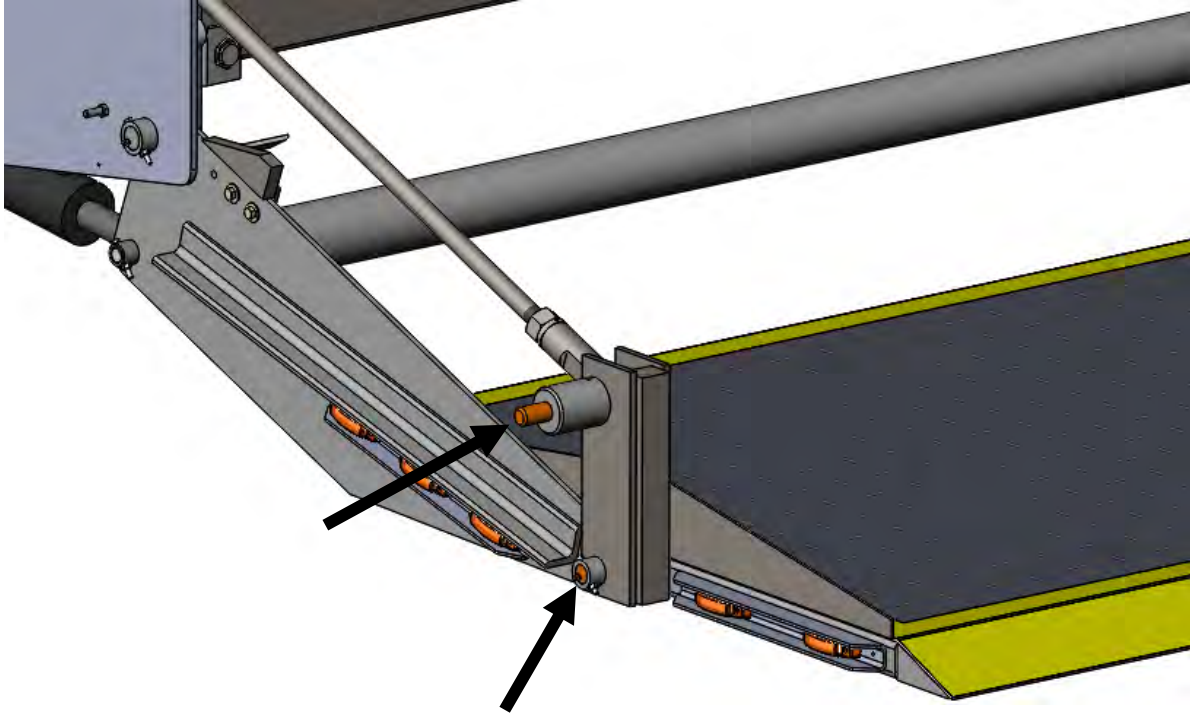
Related Parts (Available Separately):

P11062 – $\varnothing 1/4$ " Hex head cap screw, (1) required per pivot pin

P23502 – $\varnothing 1/4$ " Lock nut, (1) required per HHCS

P32016 – Grease fitting, (1) required per pin

Platform Pins



Compression Arm Pin (bottom arm): AP-817-842 (LH/RH same)



Related Parts (Available Separately):

P11062 – $\varnothing 1/4$ " Hex head cap screw, (1) required per pivot pin

P23502 – $\varnothing 1/4$ " Lock nut, (1) required per HHCS

P32016 – Grease fitting, (1) required per pin

Tension Arm Pin (top arm): BP-817-472 (LH/RH same)

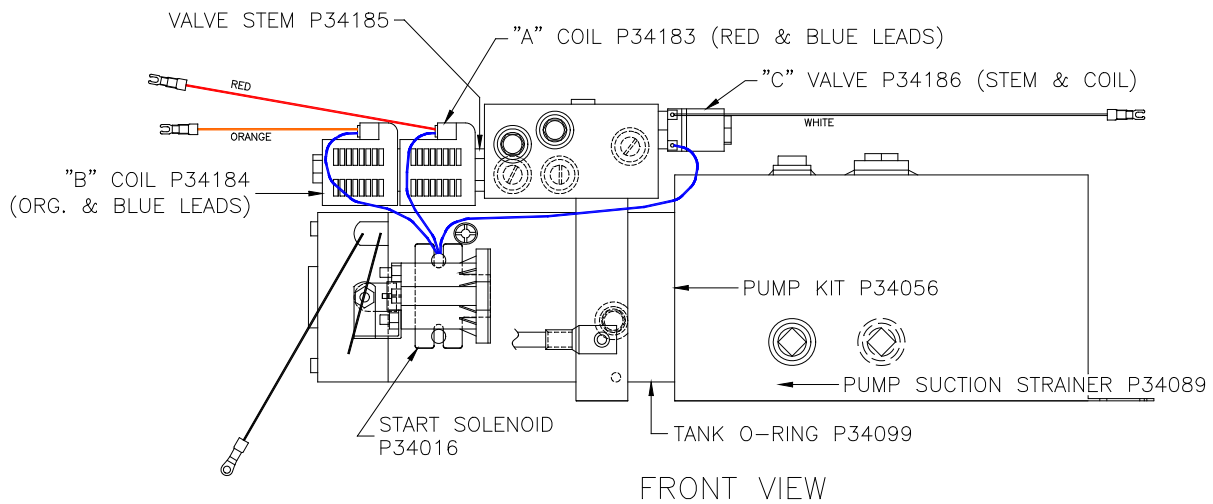
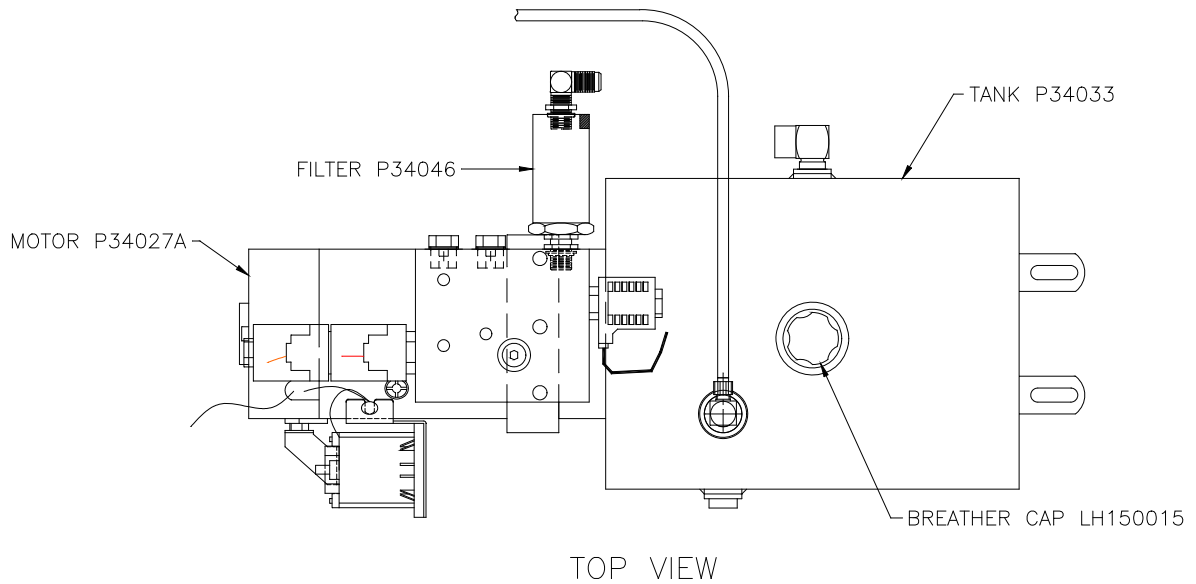


Related Parts (Available Separately):

P47538 – $\varnothing 1/4$ " Roll pin, (1) required per pivot pin

P32016 – Grease fitting, (1) required per pin

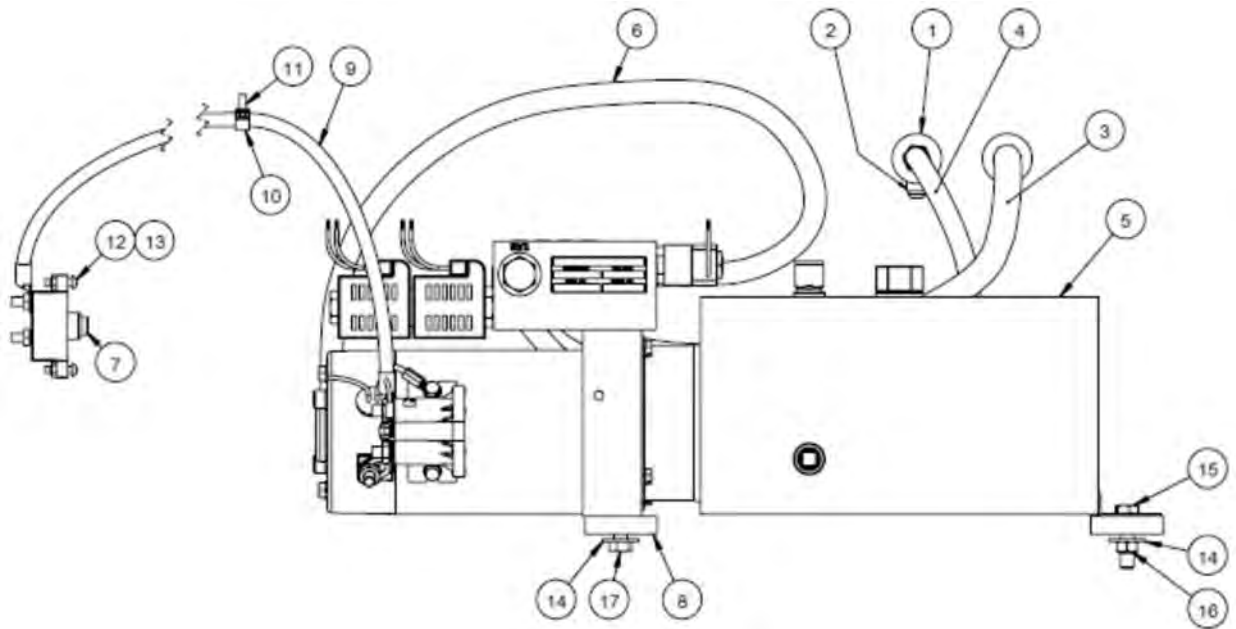
Section 3: Power Unit Replacement Parts



COMPLETE POWER UNIT (LESS FILTER AND FITTINGS) P34171
 MAINTENANCE MINDER 2[®] CONTROLLER P46608H

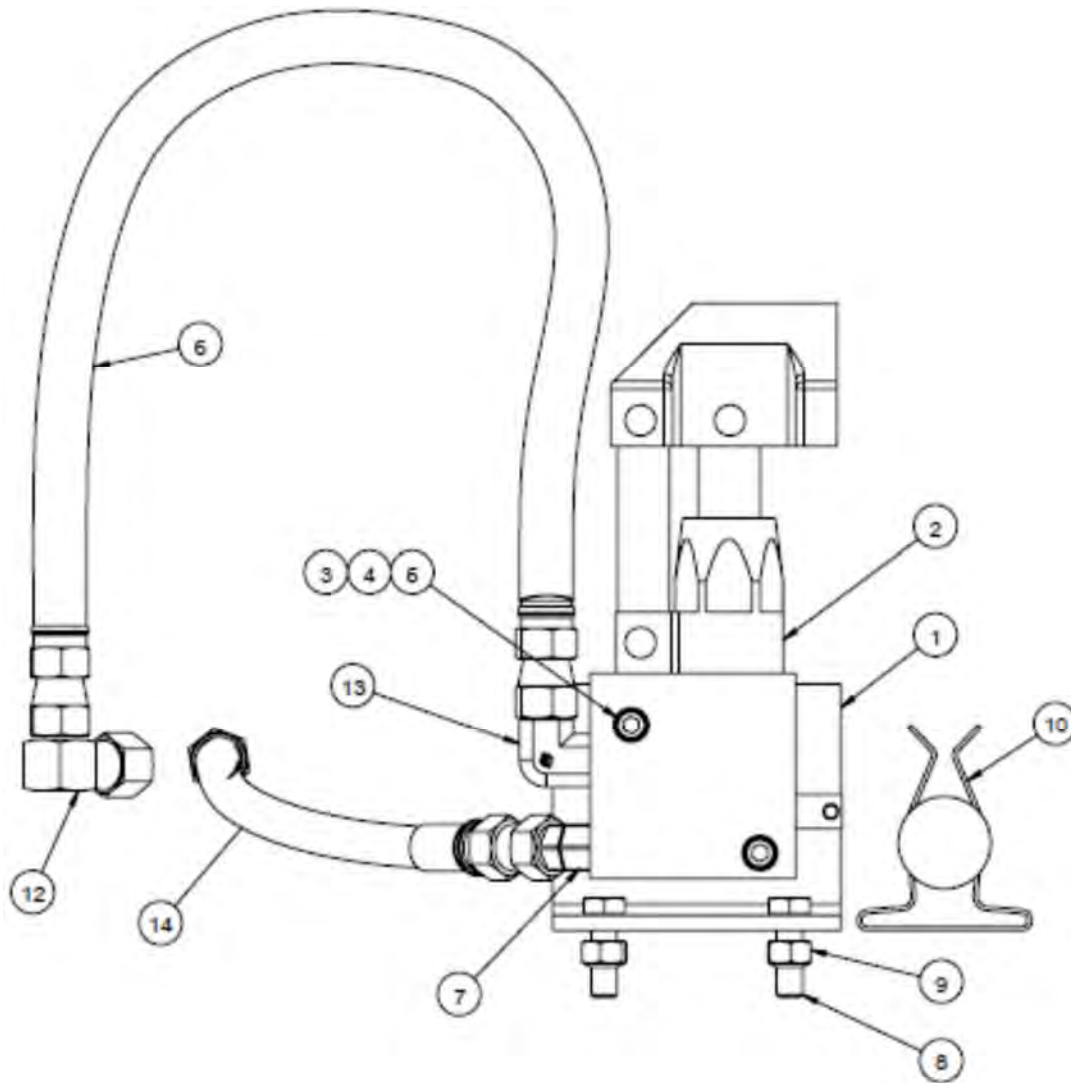
Section 4: Hydraulics – Interior Parts

Power Unit Parts



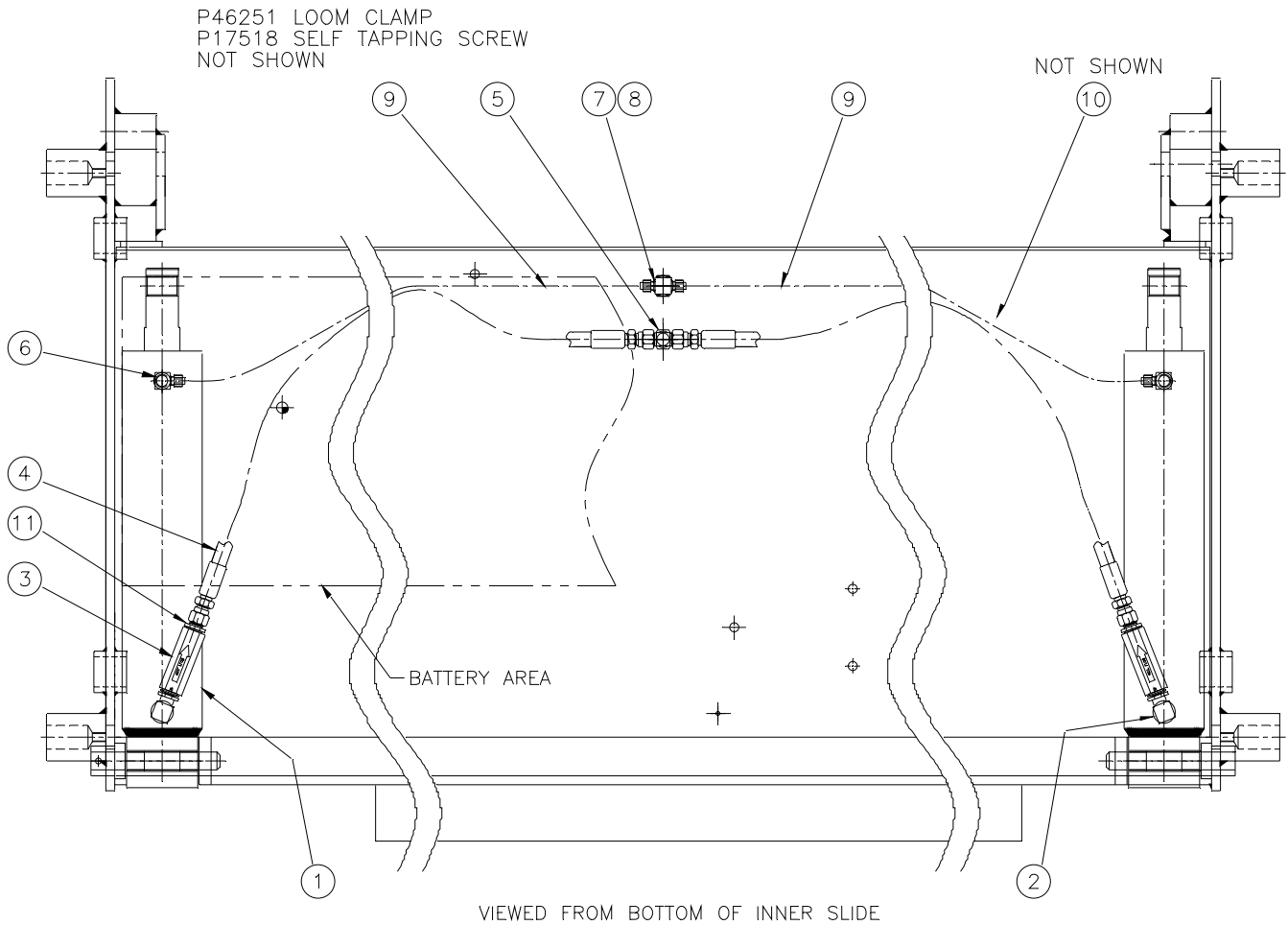
Index No.	Req'd	Part No.	Description
1	2	P26004	FLAT WASHER
2	2	P34106	BULKHEAD ELBOW W/ NUT
3	1	AT-501-354-018	HYDRAULIC LINE 18" LONG
4	1	AT-501-354-023	HYDRAULIC LINE 23" LONG
5	1	CA-501-443	BUCHER POWER UNIT
6	1	AT-501-354-027	HYDRAULIC LINE 27" LONG
7	1	P46864	CIRCUIT BREAKER 150 AMP
8	4	AP-817-838	PLASTIC SPACER
9	1	AT-551-771-055	2 GA BATT CABLE ASSY – CB TO STARTER SOL.
10	3	P46250	LOOM CLAMP ½"
11	3	P17518	SELF TAPPING SCREW
12	2	P19534	ROUND HEAD MACHINE SCREW
13	2	P23504	LOCK NUT
14	4	P26501	FLAT WASHER
15	2	P10030	HEX HEAD CAP SCREW
16	2	P23501	LOCK NUT
17	2	P10512	HEX HEAD CAP SCREW

Hand Pump Parts



Index No.	Req'd	Part No.	Description
1	1	AP-501-267	HAND PUMP MTG BRACKET
2	1	P33902	HAND PUMP WITH HANDLE
3	2	P23502	LOCK NUT
4	2	P26001	FLAT WASHER
5	2	P15541	SOCKET HEAD CAP SCREW
6	1	AT-501-354-014	HYDRAULIC LINE ASSY 3/8 DIA
7	1	P34245	45 DEG ELBOW 1/4-18 NPT M TO 9/16-18 JIC M
8	2	P10040	HEX HEAD CAP SCREW
9	2	P23510	LOCK NUT
10	2	P46192	HANDLE MTG BRACKET
12	1	P34051	90 DEG ELBOW
13	1	P34127	ELBOW 1/4-18 NPT M TO 9/16-18 JIC M
14	1	AT-501-354-020	HYDRAULIC LINE ASSY 3/8 DIA

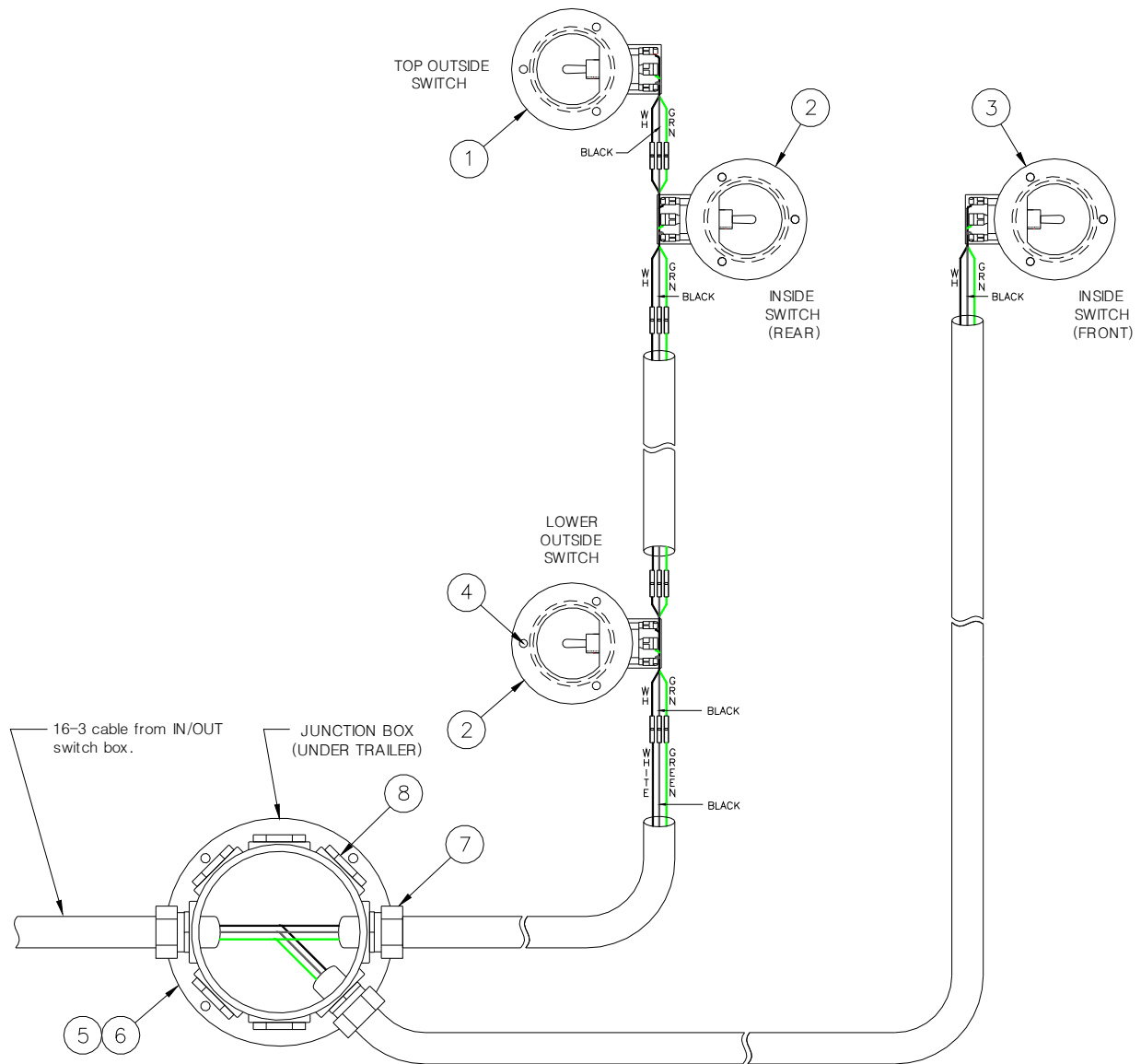
Section 5: Hydraulics – Exterior Parts



Index No.	Req'd	Part No.	Description	Comments
1	2	P34182	HYDRAULIC CYLINDER	SEAL KIT – P34217
2	2	P34041	MALE ELBOW	SAE O-RING (M) – SAE O-RING (M)
3	2	P34161	FLOW CONTROL	2.0 GPM SAE O-RING
4	2	AT-501-354-044	HYDRAULIC LINE	
5	1	P34105	BULKHEAD TEE	
6	2	P33932	BRASS MALE ELBOW	
7	1	P33699	BRASS TEE	1/4 NPT TO 1/4 TUBE
8	1	P33617	REDUCER	3/8 NPT – 1/4 NPT
9	2	P33702	1/4" POLY TUBE	41" PER CYL REQ'D
10	4	P46335	WIRE TIE	
11	2	P34044	ADAPTER	SAE O-RING (M) - JIC (M)

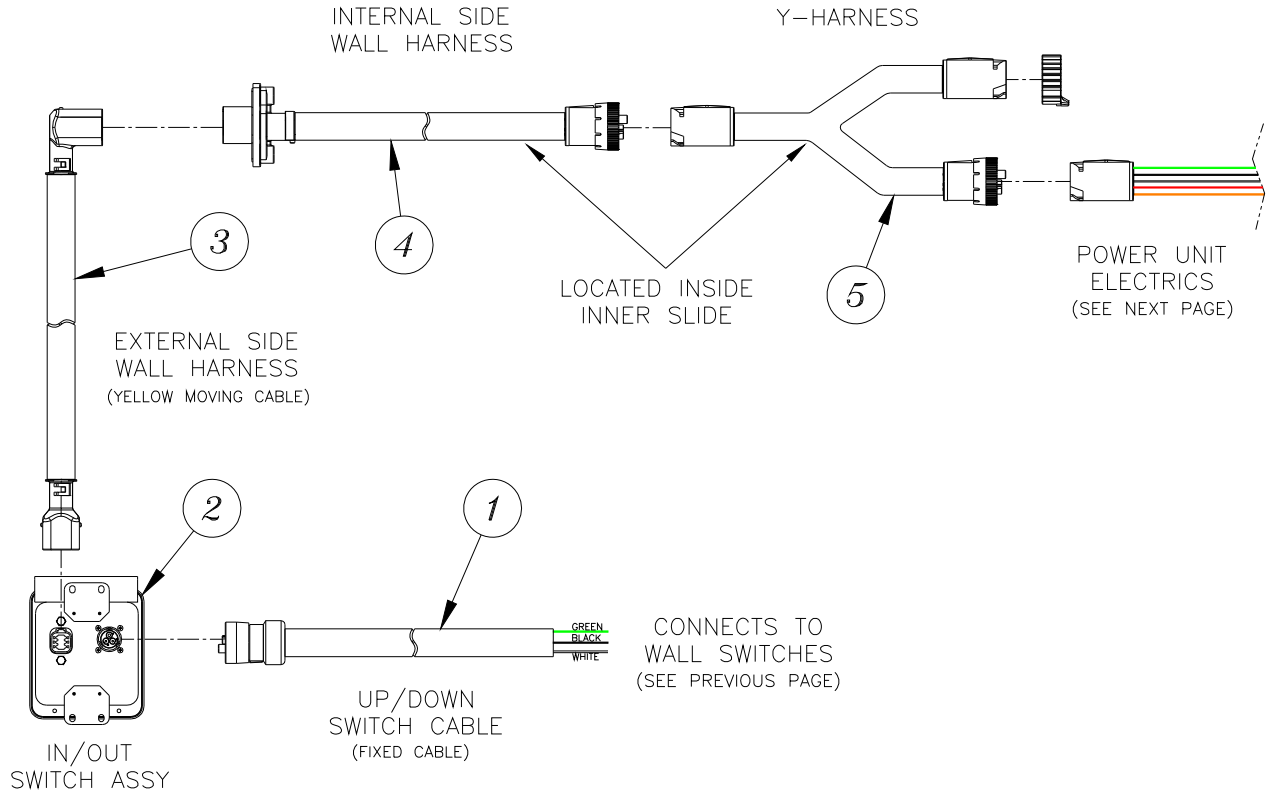
Section 6: Electrics

Recessed Switches



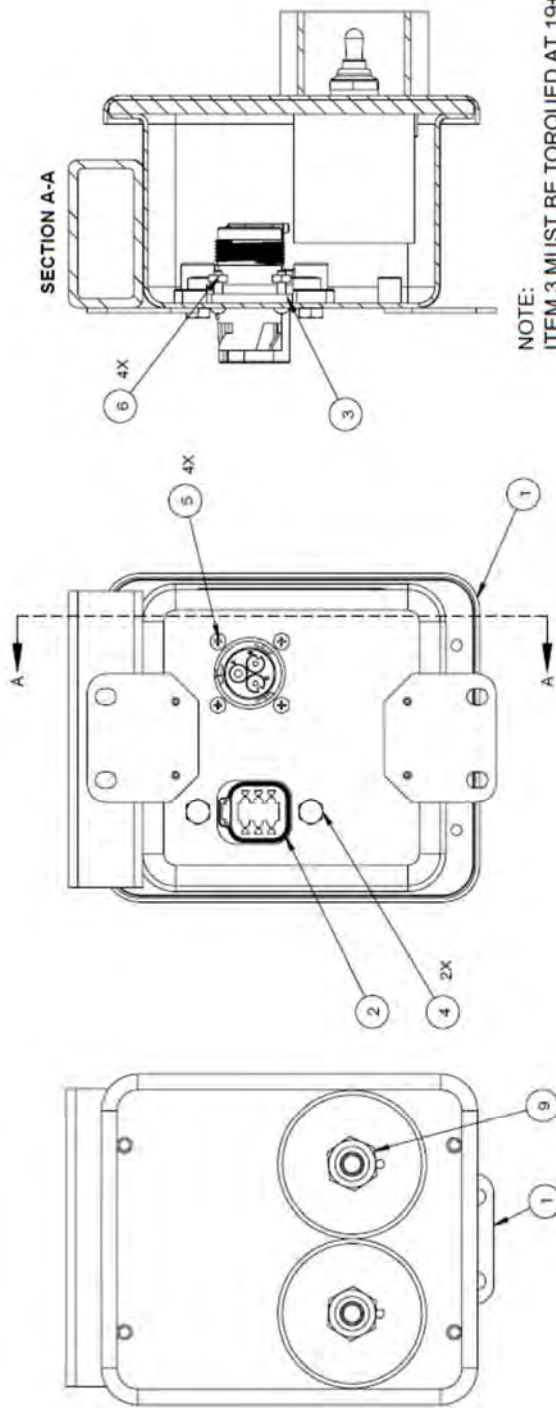
ITEM	PART NO.	DESCRIPTION	COMMENTS
1	AA-551-538	Top UP/DOWN Switch Assy (Outside)	Incl. Recessed Sw. Plate
2	P46729	Lower UP/DOWN Switch (Inside & Outside)	Incl. Recessed Sw. Plate
3	BA-551-826	Inside Front UP/DOWN Switch Assy	Incl. Recessed Sw. Plate
4	P17536	Sheet Metal Screw	3 Used Per Sw. Plate (Not Shown)
5	P46323	Junction Box	
6	P46324	Junction Box Cap	
7	P46326	Cord Grip	
8	P46325	Junction Box Plug	
9	P46292	Recessed Switch Plate	Available Separately for Switches
10	P46291	Rubber Half Boot	REF Items 1, 2 & 3

Switch Control Cables

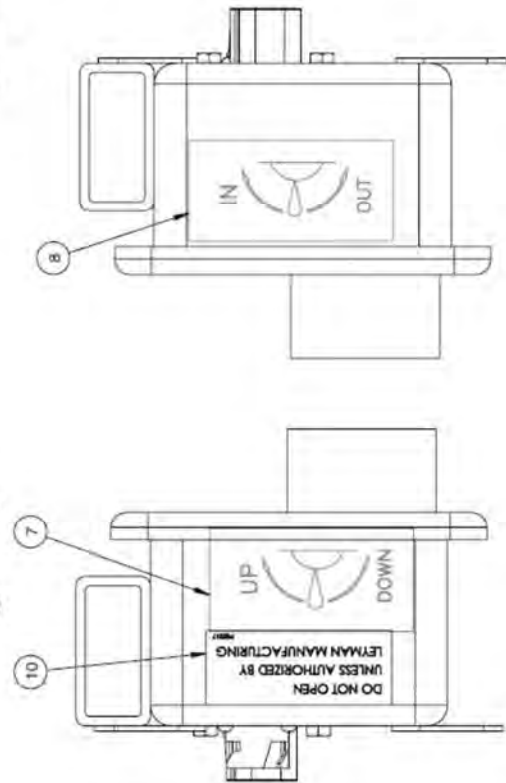


ITEM	PART NO.	DESCRIPTION	COMMENTS
1	BA-551-776-001	UP/DOWN Switch Cable	
2	BA-551-808	IN/OUT Switch Box Assy	With UP/DOWN Switch
3	BA-551-775	External Side Wall Harness	
4	BA-551-774-002	Internal Side Wall Harness	
5	BA-551-773	Y- Harness	

IN/OUT Switch Box Assembly Replacement Parts

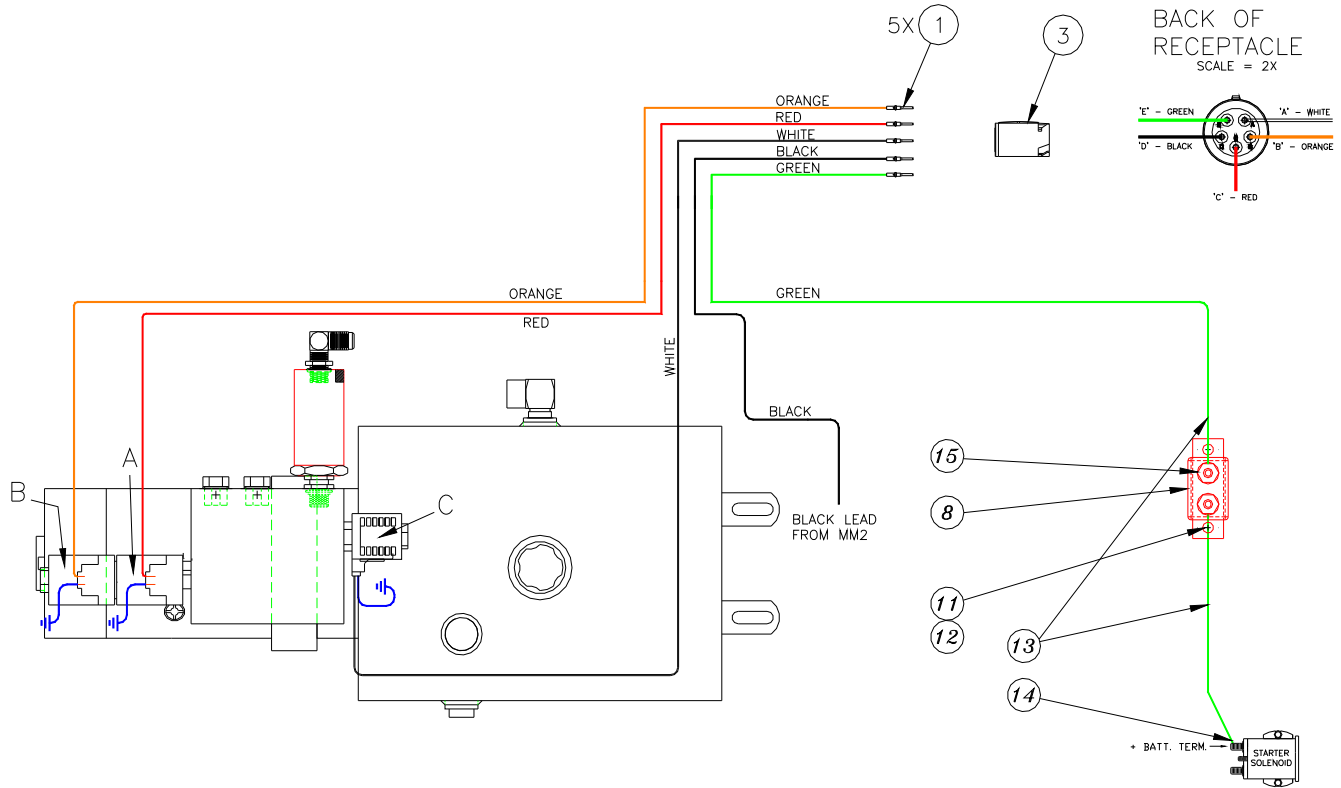


NOTE:
ITEM 3 MUST BE TORQUED AT 19+/-2 IN-LB
ITEM 4 SHOULD BE SNUG



ITEM NO.	QTY.	PART NUMBER	DESCRIPTION
10	1	P55317	DO NOT OPEN DECAL
9	2	P46291	RUBBER HALF BOOT
8	1	P55222	IN/OUT TOGGLE SWITCH DECAL
7	1	P55221	UP/DOWN TOGGLE SWITCH DECAL
6	4	P23547	4-40 ZINC PLATED MACHINE NUT
5	4	P19537	ROUND HEAD MACHINE SCREW 4-40 X 1/2
4	2	P10816	HHCS M5 X 0.8 X 12
3	1	P46901	3 PIN RECEPTACLE GASKET, HD10-3-GRT
2	1	BA-551-807	IN/OUT UP/DOWN SWITCH ASSY W/ DESUTCH CONNECTORS
1	1	BA-551-806	SWITCH BOX WELDMENT / ASSY

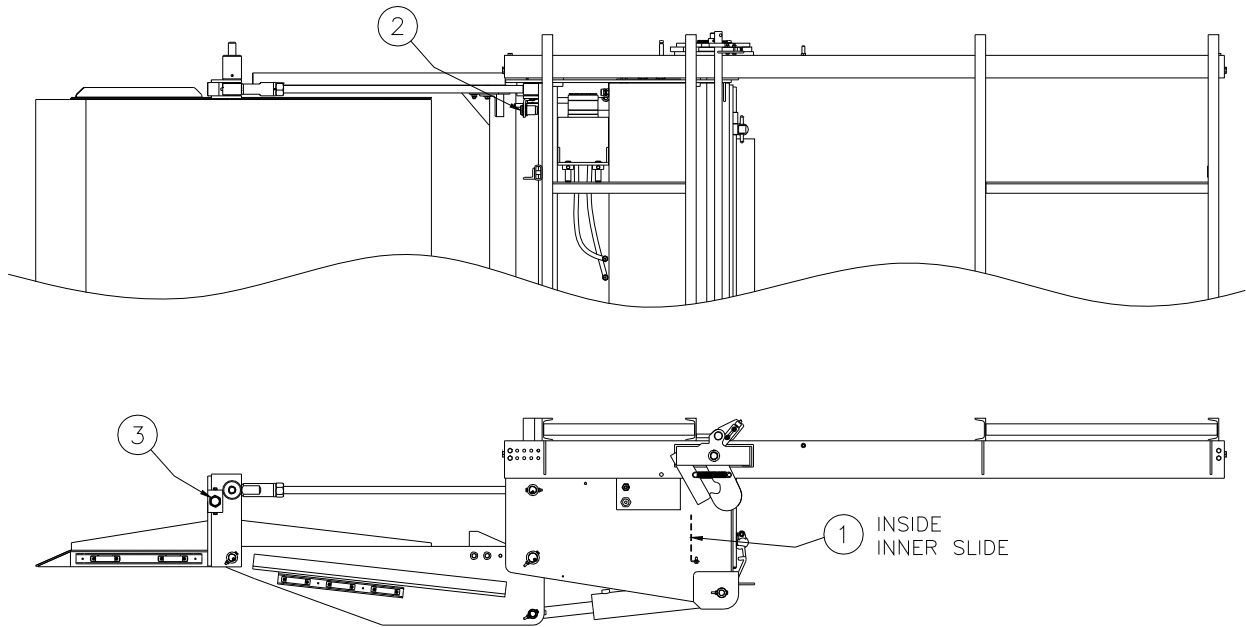
Power Unit Electric Connections



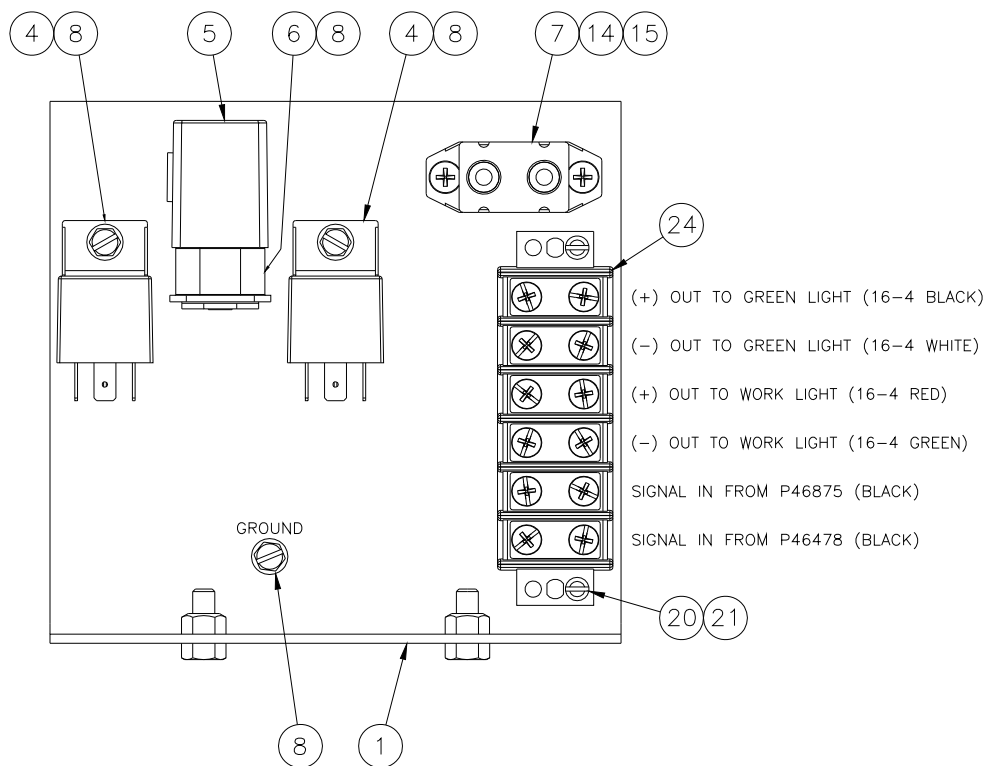
15	2	P46507	RING TERMINAL SM.		16-14, #10 SCR.	
14	1	P46751	RING TERMINAL		16-14, 3/8 SCR.	
13	2	P46301	GREEN 16 GA. WIRE		1 PC 22", 1 PC 13"	
12	2	P23504	NUT			
11	2	P19501	SCREW 10-24 X 1/2			
10	1	P17518	SELF TAPPING SCREW			
9	6	P46335	CABLE TIE, 7"		INSIDE ENCLOSURE	
8	1	P46236	20 AMP. CIR. BREAKER			
7	1	P46250	LOOM CLAMP 1/2"		FOR GROUND CABLE	
6	1	P46251	LOOM CLAMP 3/4"		FOR 16-5 CABLE	
5	1	S350-001.000	HR ROUND PLUG		3/16 DIA. X 1" LG.	
4	1	P46738	CORD GRIP 16MM x 1.5		FOR 10 GA WIRE	
3	1	P46886	RECEPTACLE		HD14-5-16P	
2	1	P46445	CORD GRIP 1/2 NPT		FOR 16-5 & 1/0 CABLE	
1	5	P46888	PIN, SOLID		0460-215-16141	
INDEX NO.	REQD.	PART NO.	PART NAME	MATL.	MATERIAL SIZE	REMARKS

Section 7: Electrics – Sensors and Lights

Exterior Proximity Sensors

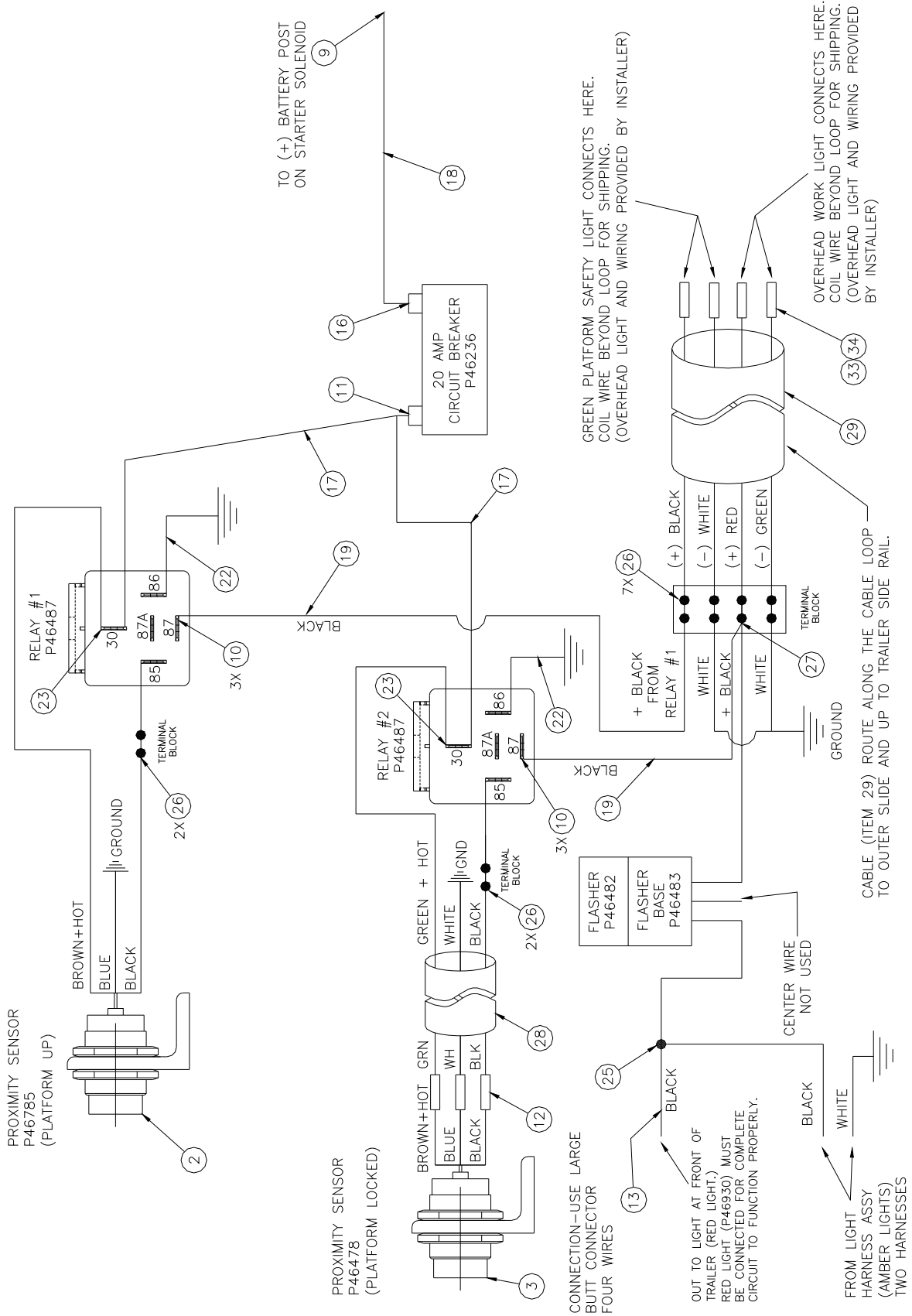


Interior Control Components



Interior Control Wiring

0



Sensors and Lights Part List

34	REF	P46279	HEAT SHRINK TUBING		5" (1 PC - 5" LONG)	
33	REF	P46156	SMALL BUTT CONNECTOR	16-14 GA.	4 REQ'D	
32	REF	P46866	GREEN LED LIGHT		1 REQ'D	
31	REF	P46930	CLEARANCE LAMP - RED		1 REQ'D	
THE FOLLOWING ITEMS SHIP LOOSE FOR THE INSTALLER						
30	1	BA-551-821	LIGHT HARNESS ASSY			
29	1	P46747	CABLE 16-4 SUPER VU-TRON		204 IN (17FT)	
28	1	P46186	CABLE 16-3	9 FT	SENSOR WIRE EXT. INSIDE INNER SLIDE	
27	1	P46444	FORK TERMINAL	12-10 GA.		
26	12	P46319	FORK TERMINALS	16-14 GA.		
25	2	P46157	BUTT CONNECTOR - LARGE	12-10 GA.		
24	1	P46449	6 POLE TERMINAL BLOCK			
23	2	P46665	FEMALE TERMINAL PUSH ON	12-10 GA.	FOR RELAY CONN., DBL. WIRE	
22	2	P46018	WHITE WIRE 16 GA	6 IN LG	RELAY GROUNDS	
21	2	P23535	LOCK NUT W/NYLON INSERT		#6-32	
20	2	P19519	ROUND HD SCREW		#6-32 X 3/4	
19	2	P46017	BLACK WIRE 16-GA	6 IN LG	FROM RELAY TO CIRCUIT BREAKER	
18	1	P46301	GREEN WIRE 16-GA	48 IN LG	FROM CIR BREAKER TO BATTERY POST	
17	2	P46301	GREEN WIRE 16-GA	8 IN LG	FROM RELAY TO TERMINAL STRIP	
16	1	P46507	SMALL RING TERMINAL	16-14 GA.		
15	2	P23504	HEX NUT FLEXLOC		#10-24	
14	2	P19501	RHMS		#10-24 X 1/2 LG	
13	1	P46017	BLACK WIRE 16-GA	50 FT LG	TO FRONT OF TRAILER	
12	5	P46156	SMALL BUTT CONNECTOR	16-14 GA.		
11	4	P46047	SMALL RING TERMINAL	12-10 GA.	CIRCUIT BREAKER AND 3 GROUNDS	
10	6	P46318	FEMALE TERMINAL PUSH ON	16 GA	FOR RELAY CONN., SINGLE WIRE	
9	1	P46751	LARGE RING TERMINAL	16-14 GA.	TO STARTER LG HOT POST	
8	5	P17518	SELF TAPPING SCREW		RELAYS-2, FLASHER-2, GND-1	
7	1	P46236	CIRCUIT BREAKER		20 AMP AUTO RESET	
6	1	P46483	FLASHER BASE			
5	1	P46482	FLASHER			
4	2	P46487	RELAY			
3	1	P46478	PROXIMITY SENSOR		NORMALLY CLOSED	
2	1	P46785	PROXIMITY SENSOR		NORMALLY OPEN	
1	REF	BP-817-1091	CONTROL MODULE BRACKET			
INDEX NO.	REQD.	PART NO.	PART NAME	MATL.	MATERIAL SIZE	REMARKS