



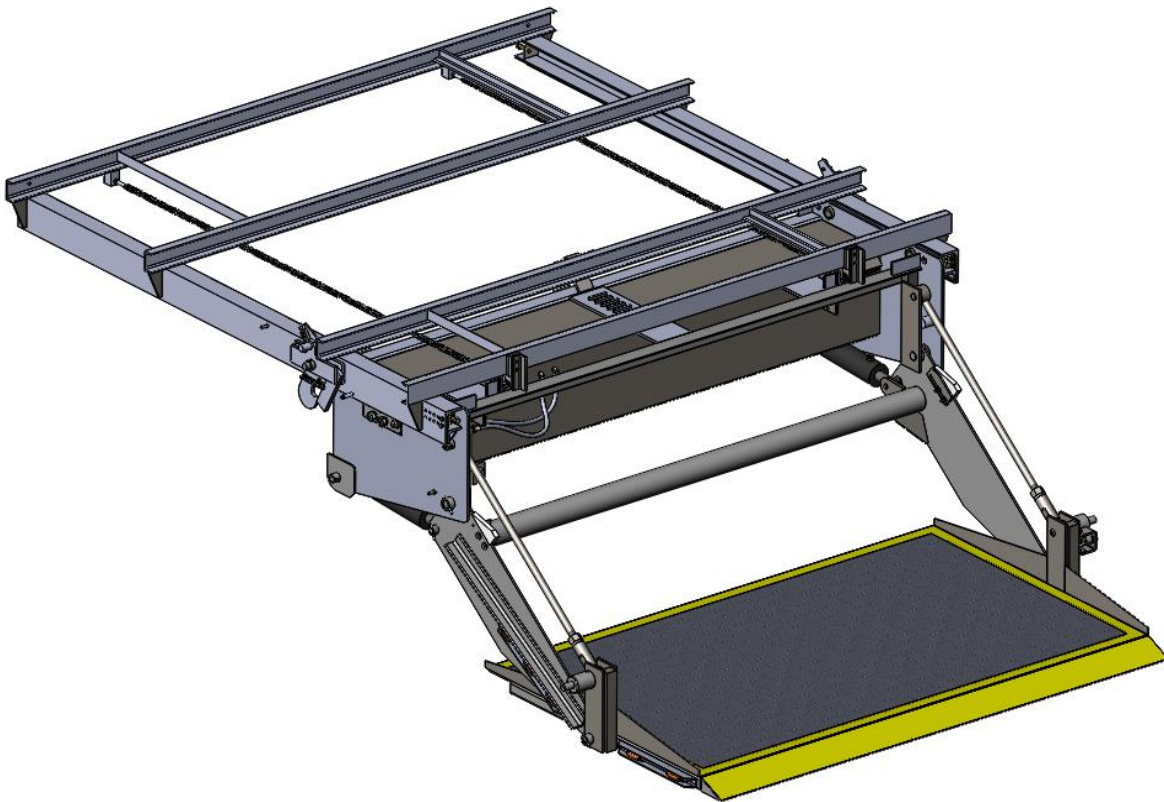
Installation Supplement

For

DOMINO'S PIZZA

TLS3510RL Hide-A-Way®

Trailer Side Gate



LEYMAN MANUFACTURING CORPORATION
10335 Wayne Avenue
Cincinnati, OH 45242
1-866-LEYMAN-1 • 1-866-539-6261 • 513-891-6210
Fax 513-891-4901
www.leymanlift.com
sales@leymanlift.com

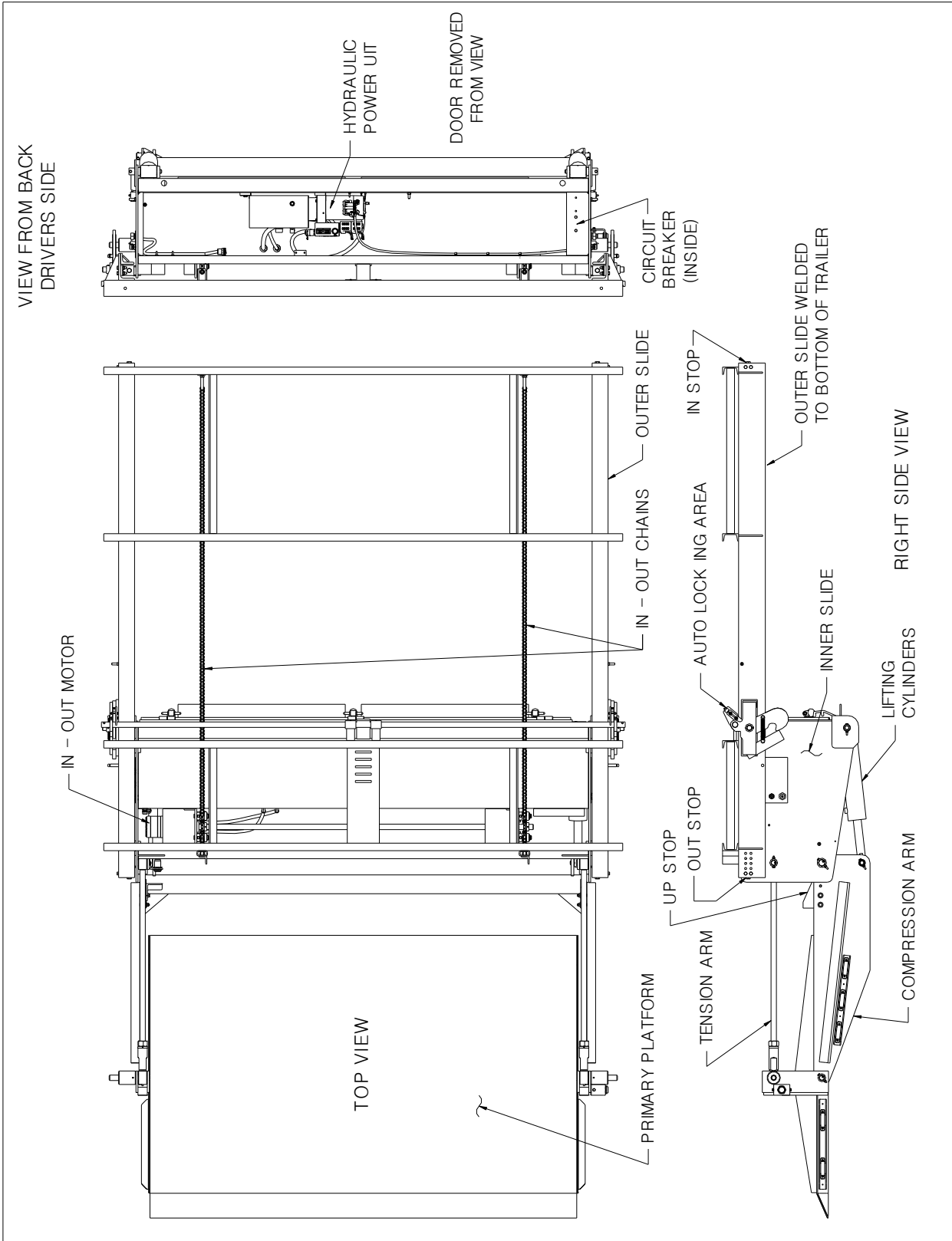
TABLE OF CONTENTS

Foreword	3
General Terminology	4
Minimum Mounting Space Requirements	5
Toggle Switch Electrics - Installation	6
Sensor Locations and Adjustments	8
Lights and Sensor Electrical Connections	11
Light Wiring Connections	12
Operating Instructions	13
Notes	14

FOREWARD

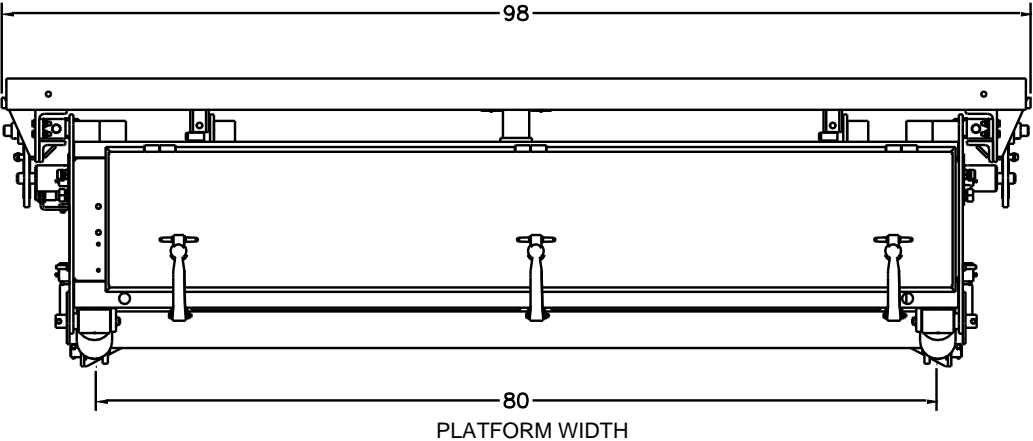
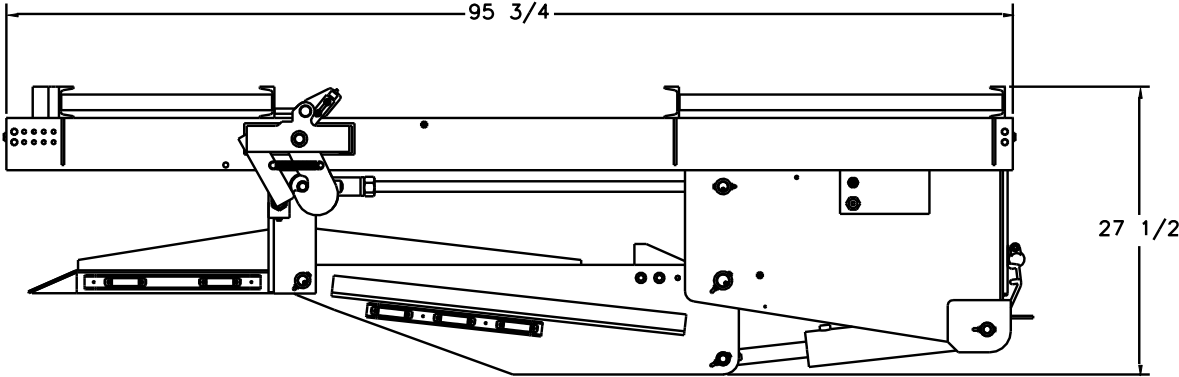
This installation manual supplement is intended to be used in conjunction with the standard installation manual. It contains model-specific space requirements as well as the specialized switches and external light connections not featured on the standard TLS series of lift gate.

GENERAL TERMINOLOGY



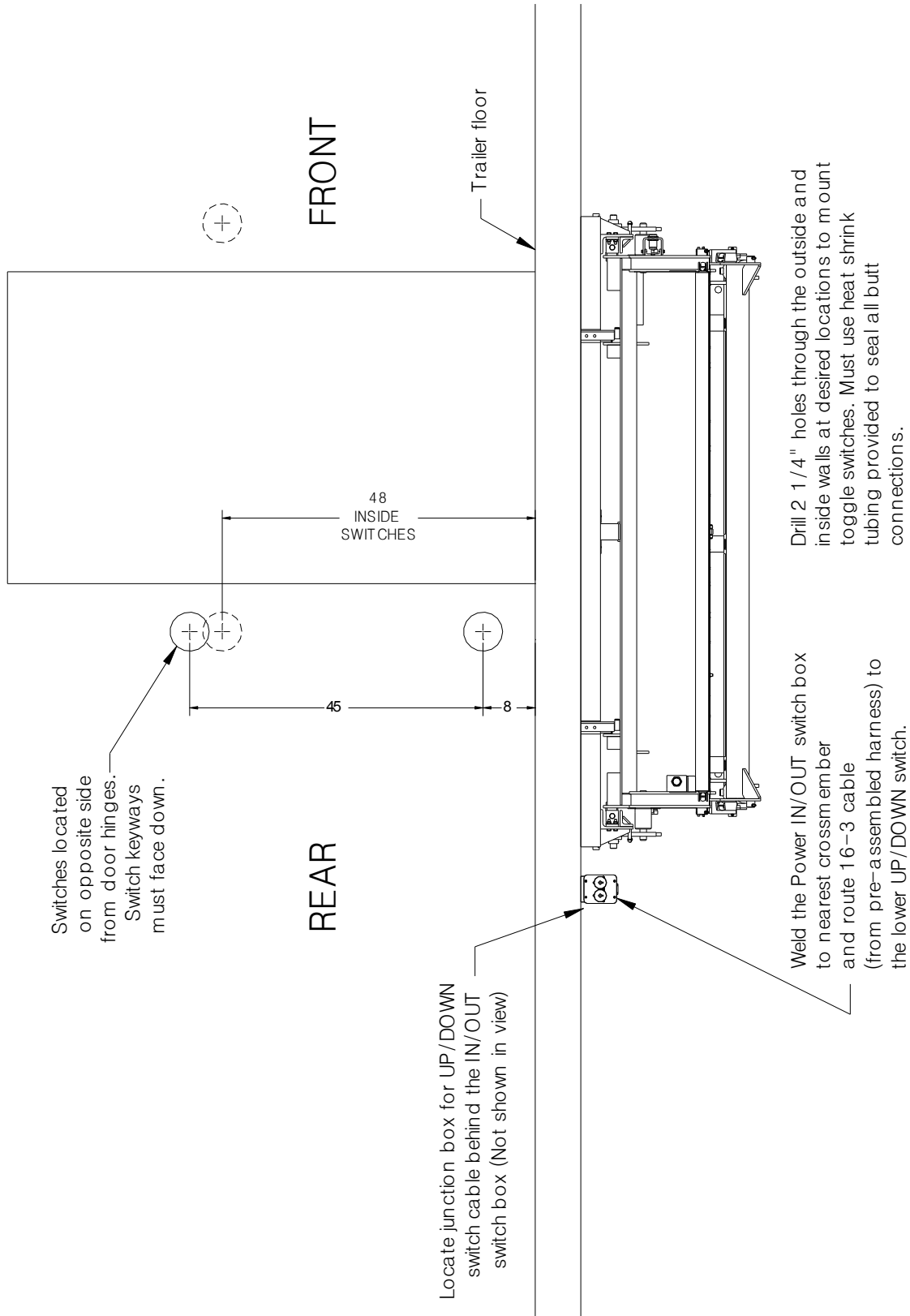
MINIMUM MOUNTING SPACE REQUIREMENTS

MINIMUM SPACE REQUIREMENTS NEEDED TO INSTALL THE TLS3510 SERIES GATE

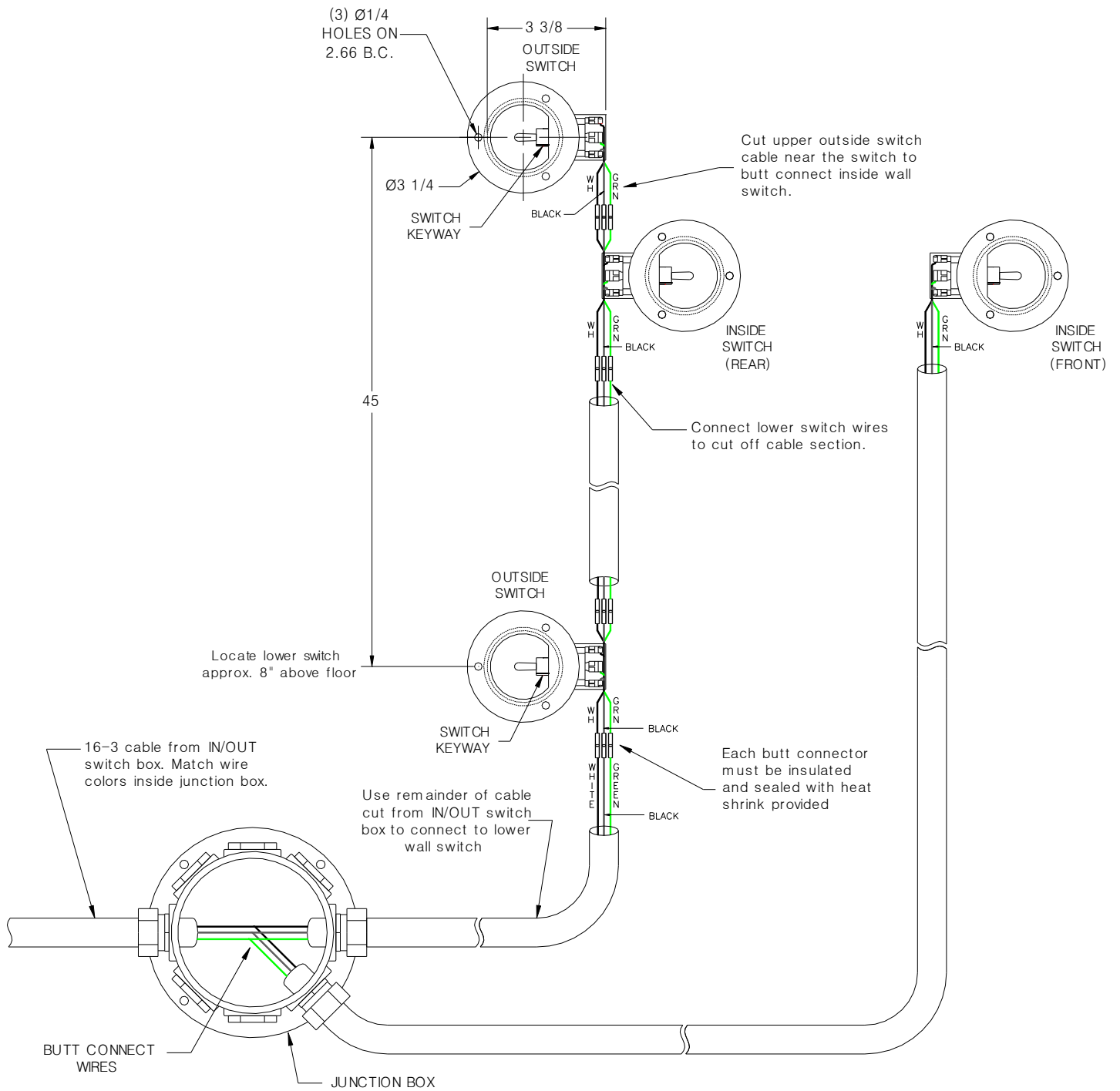


TOGGLE SWITCH ELECTRICS – INSTALLATION

SWITCH LOCATIONS:



SWITCH WIRING:

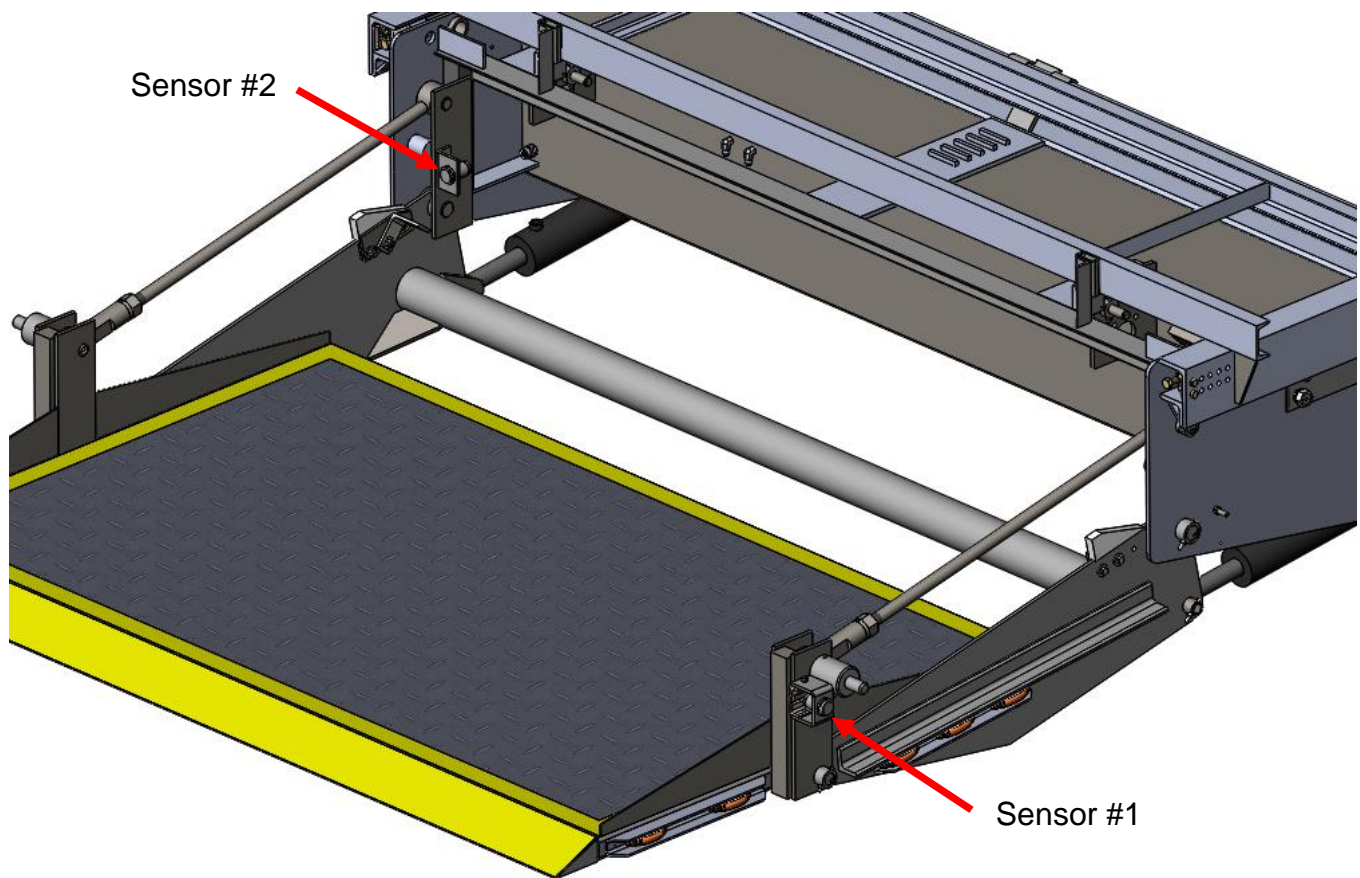


SENSOR LOCATIONS AND ADJUSTMENTS

Two proximity sensors are located on the liftgate which activate different lighting functions.

Sensor #1: platform locked sensor – turns on amber flashing lights, red nose warning light and overhead work light when platform drops out of the auto lock mechanism.

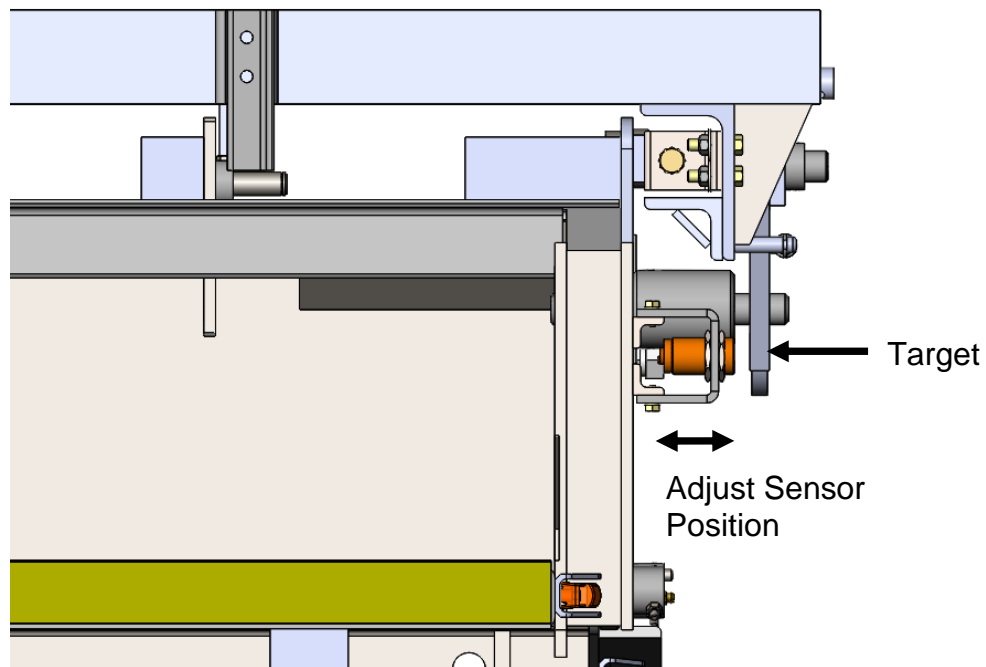
Sensor #2: platform UP sensor – turns on green light mounted inside trailer when the platform is at the trailer floor.



SENSOR #1 POSITION:

This sensor has been adjusted at the factory and should not require any adjustment during lift gate installation. Once gate has been installed and powered up, check that amber lights, overhead work light and red nose warning light turn on when the platform is released from the auto lock. The lights will turn off when the platform is back up in the auto lock.

If the lights do not turn off, move the sensor closer to the target. Verify with several lock/unlock cycles that the lights operate properly and remember to tighten jam nuts to hold sensor in place. Also, ensure that the sensor has not been adjusted too close to the target and will make contact when the platform is raised. Damage to the sensor will result.

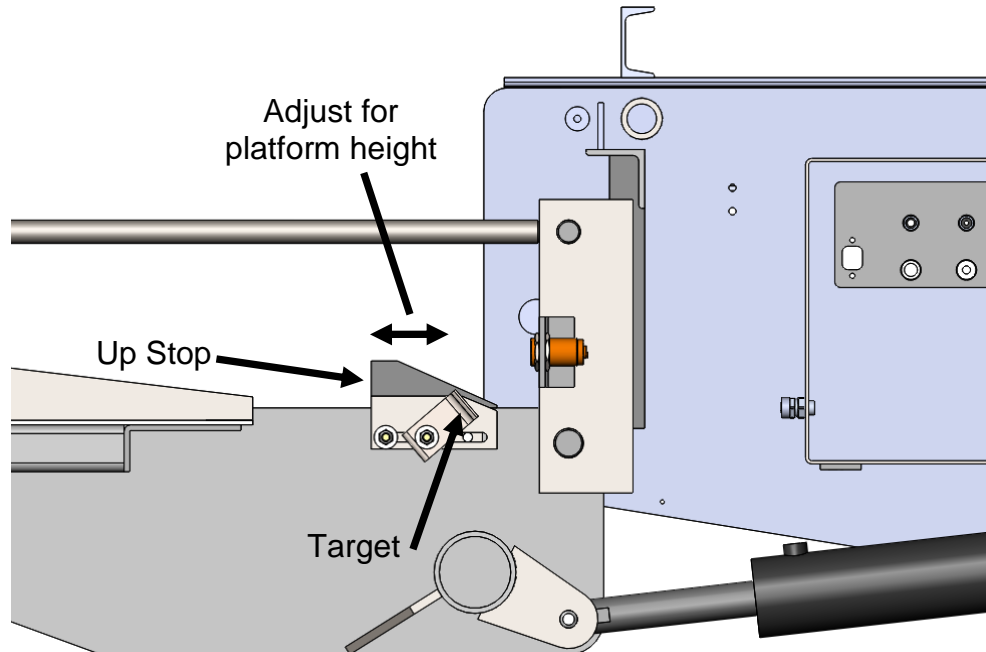


Note: an incandescent light must be connected to the flasher for proper operation. If the light is NOT connected, the amber LED marker lights on the compression arm and platform will dimly light, but will not flash.

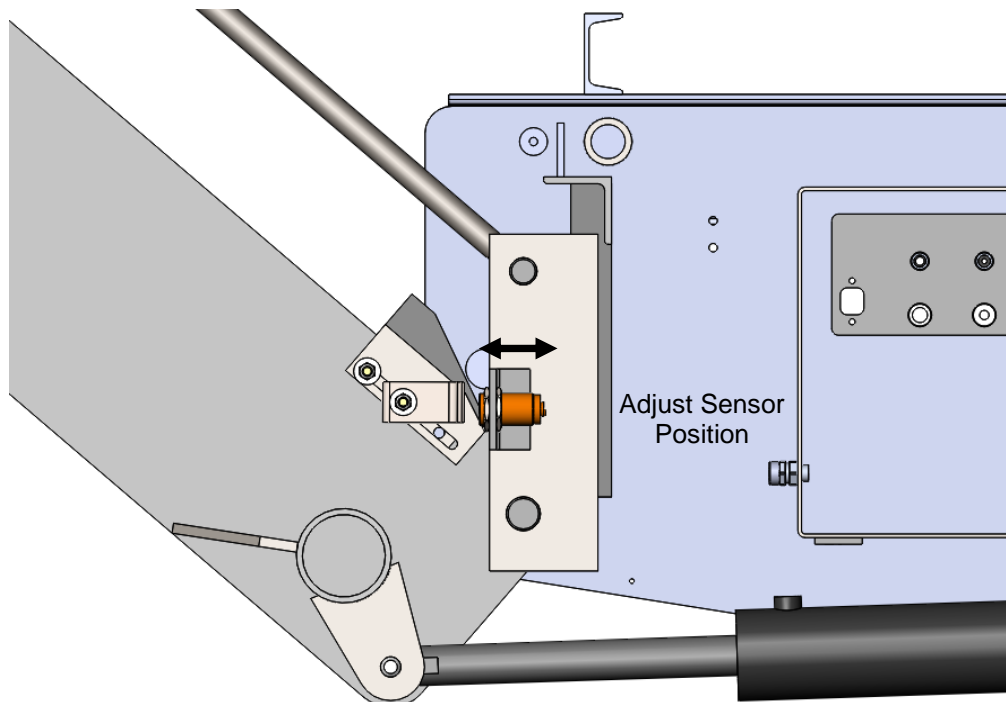
50 feet of black 16 gauge wire is coiled on the left side of the inner slide for this incandescent light. It is to be uncoiled and run underneath the trailer during installation to connect to the red warning light located at the nose.

SENSOR #2 POSITION:

This sensor has been set at the factory to activate when the platform is in the full up position. If the up stops have been adjusted during installation so that the platform is level with the trailer floor, the sensor position should be adjusted as well for proper operation.



Move the sensor closer to or away from the target as required so that the sensor activates at the full up position. As with the other sensor, ensure that there no contact will be made between the target and the sensor as it will result in damage.

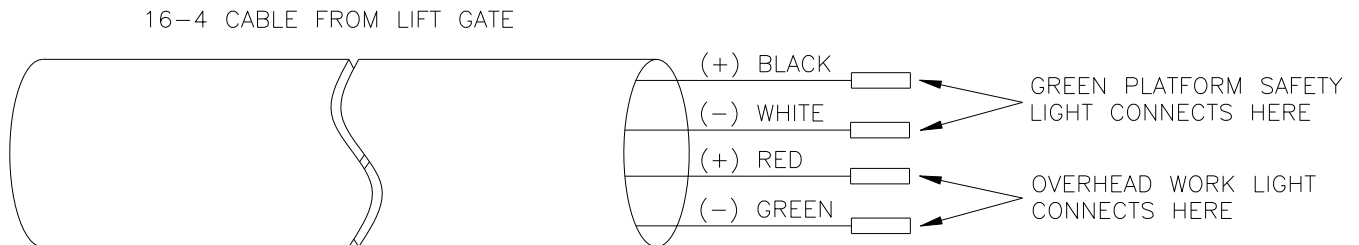


LIGHT WIRING CONNECTIONS:

A length of 16-4 multi-conductor cable has been coiled up on the left side of the outer slide. This cable will be used to connect to both the exterior overhead work light (provided by installer) and interior green light (provided by Leyman).

Uncoil and route cable toward trailer side wall using clamps or other methods as required.

Using butt connectors, connect the black and white wires from the interior green light to the black and white wires of the 16-4 cable. Connect the power and ground wires from the overhead work light to the red and green wires of the 16-4 cable; red is positive, green is negative.



OPERATING INSTRUCTIONS

Before operating the lift gate, read and understand this manual and all urgent warning decals.

Do not stand in front of the lift gate while unfolding or using the platform.

With the gate in the over-the-road (stored) position, proceed with the following steps:

1. To relieve the tension on the auto lock, push the up switch (the gate will go up), pull the handle to release the auto lock.
2. Use the down switch to lower the lift until arms are parallel to the ground.
3. Stand to the side of the lift gate. Push the power in/out switch down. Gate will run out. Run the gate out until it stops and locks into its fully extended position.

To lower the platform, use the down switch only.

To raise the platform, use the up switch only.

To store the gate in the over-the-road (stored) position:

1. Raise the platform off the ground until the arms are parallel to the ground.
2. Raise locking bar handle and push the in/out switch upward. Run the gate all the way under the trailer until the lift stops.
3. Run gate up (use the up switch). The auto lock will latch.
4. Lower the gate using the down switch only until resting on the auto lock hooks.

